



# LAGOS STATE GOVERNMENT

## Spotlight on Lagos Statistics, 2021 Edition

Lagos Bureau of Statistics,  
Ministry of Economic Planning and Budget,  
The Secretariat, Alausa, Ikeja, Lagos State.

Date: February, 2022



LAGOS STATE  
MINISTRY OF ECONOMIC PLANNING AND BUDGET



## Overview

The Lagos Bureau of Statistics (LBS) is saddled with the responsibility of managing and disseminating comprehensive, timely and reliable statistical data, hence the need for the Basic Statistical Hotline Publication. The Basic Statistical Hotline is a yearly publication of essential data indicators which contribute to a wider and timely dissemination of information to users on the major activities of the Lagos State Government.

However, this year's publication which is dubbed **The Spotlight on Lagos Statistics** is an improvement on the yearly Basic Statistical Hotline, and is in line with the **THEMES** agenda of Lagos State. It showcases the key social and economical statistical indicators suitable for research, reference and planning purposes by researchers, planners, administrators and decision-makers.

The Bureau therefore appreciates the co-operation and support of the Planning, Research and Statistics Units and other data providers in the various Ministries, Departments and Agencies (MDAs) that have been very helpful in providing the information required for this publication.

Suggestions and comments aimed at improving the coverage and scope of the contents of this publication is also appreciated.

Thank you.

Lagos Bureau of Statistics  
Ministry of Economic Planning and Budget  
The Secretariat  
Alausa, Ikeja,  
Lagos.  
[lbs@lagosstate.gov.ng](mailto:lbs@lagosstate.gov.ng)

# Contents

<b>List of Abbreviations and Acronyms</b>	<b>ii</b>
<b>List of Figures</b>	<b>iv</b>
<b>List of Tables</b>	<b>vi</b>
<b>1 Chapter 1: Demography of Lagos State</b>	<b>1</b>
<b>2 Chapter 2: Transportation and Traffic Management</b>	<b>2</b>
2.1 Improving Traffic Flow . . . . .	2
2.2 Safety of Commuters . . . . .	5
2.3 Compliance Level of Lagosian to Road Transportation . . . . .	9
2.4 Operating Smart Transportation Network . . . . .	13
<b>3 Chapter 3: Health and Environment</b>	<b>16</b>
3.1 Access to Healthcare . . . . .	16
3.2 Maternal Health . . . . .	20
3.3 Workforce . . . . .	29
3.4 In-Patients Attendance . . . . .	31
3.5 Environment . . . . .	35
<b>4 Chapter 4: Education and Technology</b>	<b>37</b>
4.1 Access to Education . . . . .	37
4.2 Special needs children . . . . .	43
4.3 Students-teacher ratio . . . . .	45
4.4 Teachers Statistics and Performance . . . . .	48
4.5 School Facility . . . . .	50
4.6 Technology and Innovation . . . . .	51
<b>5 Chapter 5: Making Lagos a 21st Century</b>	<b>53</b>
<b>6 Chapter 6: Entertainment and Tourism</b>	<b>54</b>
6.1 Tourism . . . . .	54
<b>7 Chapter 7: Security, Governance and Finance</b>	<b>55</b>
7.1 Criminal Cases . . . . .	55
7.2 Judiciary . . . . .	56

## List of Abbreviations and Acronyms

**LBS** Lagos Bureau of Statistics

**THEMES** Traffic and Management

Health

Education and Technology

Making Lagos a 21st Century

Entertainment and Tourism

Security.

**MEPB** Ministry of Economic Planning and Budget

**ECOWAS** Economic Community of West African States

**LGA** Local Government Area

**BMGF** Bill and Melinda Gates Foundation

**DSN** Data Scientist Network

**MFB** Micro Finance Bank

**LASTMA** Lagos State Traffic Management Authority

**STEM** Science, Technology, Engineering and Mathematics

**DASCA** Data Science Council of America



## List of Figures

2.1	Trend of Road Constructed in Lagos State from 2017-2020 . . . . .	2
2.2	Trend of Overhead link bridges constructed from 2018-2020 . . . . .	3
2.3	Trend Interpolation of Road construction and Accident Statistics from 2018-2020 . . . . .	4
2.4	Road Accidents recorded in Lagos State from 2017-2020 . . . . .	5
2.5	Trend of Quarterly Statistics of Road Accidents from 2017-2020 . . . . .	6
2.6	Trend of Accidents Casualty cases from 2017-2020 . . . . .	7
2.7	Trend of Accidents Casualty by Gender from 2017-2020 . . . . .	8
2.8	Chart of vehicles impounded from 2017-2020 . . . . .	9
2.9	Chart of vehicular Offences from 2017-2020 . . . . .	10
2.10	Chart and Trend of Quarterly Statistics of Vehicles Impounded from 2017-2020 . . . . .	11
2.11	Chart and Trend line of Quarterly Statistics of vehicular Offences from 2017-2020 . . . . .	12
2.12	Chart of Passenger Traffic on BRT, 2017- 2019 . . . . .	13
2.13	Chart of Passenger Traffic on Ferries and Jetties from 2017-2019 . . . . .	15
3.1	Distribution of Primary Health Facilities 2019 and 2020 . . . . .	17
3.2	Distribution of Secondary Health Facilities in Lagos . . . . .	19
3.3	Statistical Analysis of Live Births across 5 Secondary Health Facilities in Lagos State from year 2017 to 2020 . . . . .	21
3.4	Trend of Live Births recorded Secondary Health Facilities in Lagos State from year 2017 to 2020. . . . .	22
3.5	Statistical Analysis of Maternal Deaths recorded across 5 Secondary Health Facilities in Lagos State . . . . .	24
3.6	Trend of Maternal Deaths across Secondary Health Facilities in Lagos State from year 2017 to 2020. . . . .	24
3.7	Statistical Analysis of Still Birth value across 5 Secondary Health Facilities in Lagos State from year 2017 to 2020 . . . . .	26
3.8	Trend of Still Birth value of 5 Secondary Health Facilities in Lagos State from year 2017 to 2020 . . . . .	26
3.9	Analysis of Neonatal Deaths recorded across Five Secondary Health Facilities in Lagos State . . . . .	28
3.10	Analysis of Doctors across all the Health Facilities in Lagos . . . . .	30
3.11	Analysis showing Patients on Admission . . . . .	32
3.12	Percentage of Bed Occupancy . . . . .	34
3.13	Analysis on Major Water Works . . . . .	35
3.14	Analysis of Refuse Deposited at Various Landfill Sites . . . . .	36
4.1	Distribution of Primary School pupils 2019/2020 Academic session . . . . .	38
4.2	Enrolment trend of primary pupils from 2016/2017 to 2019/2020 academic sessions . . . . .	38
4.3	Distribution of Junior Secondary School students 2019/2020 Academic session . . . . .	40
4.4	Enrolment trend of Junior Secondary students from 2016/2017 to 2019/2020 academic sessions . . . . .	40
4.5	Distribution of Senior Secondary School students 2019/2020 Academic session . . . . .	42
4.6	Enrolment trend of Senior Secondary students from 2016/2017 to 2019/2020 academic sessions . . . . .	42
4.7	Enrolment and Composition of special needs children in primary and secondary schools. . . . .	44

4.8	Distribution and enrolment trend of Special needs students by disability . . . . .	44
4.9	Distribution of Students-Teacher ratio in Primary, Junior, and Senior Secondary Schools per LGA in 2019/2020 academic session . . . . .	46
4.10	Trend of Students-Teacher ratio in Primary, Junior and Senior Secondary schools from 2016/2017 to 2019/2020 academic sessions. . . . .	47
4.11	Trend of STEM Teachers from 2016/2017 to 2019/2020 Academic Session. . . . .	48
4.12	Trend of teachers' training performance from 2016/2017 to 2019/2020 Academic Session. . .	49
4.13	Correlation and Trend of operational computer labs vs students in secondary schools from 2016/2017 to 2019/2020 Academic Sessions. . . . .	50
5.1	Making Lagos a 21st Century . . . . .	53
7.1	Composition and trend criminal cases in Lagos State from year 2017 to 2018. . . . .	55
7.2	Trend of activities in Lagos State Judiciary from 2017 to 2020. . . . .	56

## List of Tables

1.1	Demography of Lagos State . . . . .	1
2.1	Annual Road Constructed in Lagos State . . . . .	2
2.2	Annual Statistics of Overhead Link Bridges Constructed in Lagos State . . . . .	3
2.3	Annual Statistics of Road Constructed and Accidents Recorded . . . . .	4
2.4	Annual Statistics on Road Accidents Recorded in Lagos State . . . . .	5
2.5	Quarterly Statistics of Road Accidents Recorded in Lagos State . . . . .	6
2.6	Annual Accident Statistics by Casualty . . . . .	7
2.7	Annual Accident Statistics by Gender . . . . .	8
2.8	Annual Statistics of Vehicles Impounded in Lagos State . . . . .	9
2.9	Annual Statistics of Vehicular Offences in Lagos State . . . . .	10
2.10	Quarterly Statistics of Vehicles Impounded in Lagos State . . . . .	11
2.11	Quarterly Statistics of Vehicular Offences in Lagos State . . . . .	12
2.12	BRT Passengers . . . . .	13
2.13	Annual Passenger Traffic on Ferries and Jetties in Lagos State . . . . .	14
3.1	Statistics of Primary Health Facilities . . . . .	16
3.2	Statistics of Secondary and Tertiary Health Facilities . . . . .	18
3.3	Statistics of Live Births Recorded across Secondary Health Facilities . . . . .	20
3.4	Statistics of Maternal Deaths . . . . .	23
3.5	Statistics of Still Birth Value across Lagos State . . . . .	25
3.6	Statistics of Neonatal Deaths Recorded across Lagos State . . . . .	27
3.7	Statistics of Number of Doctors in Lagos State . . . . .	29
3.8	Statistics on In-Patient Attendance . . . . .	31
3.9	Percentage Bed Occupancy . . . . .	33
3.10	Analysis of Water Production on Major Waterworks (MG-Million) Gallon . . . . .	35
3.11	Statistics Refuse Deposited at Various Landfill Sites . . . . .	36
4.1	Enrolment in Public Primary School by LGA from year 2016/2017 to 2019/2020 . . . . .	37
4.2	Enrolment in Junior Secondary School by gender in each LGA from year 2016/2017 to 2019/2020	39
4.3	Enrolment in Senior Secondary School by gender in each LGA from year 2016/2017 to 2019/2020	41
4.4	Enrolment of Special needs students in public primary and secondary school by disability from 2016/2017 to 2019/2020 academic sessions . . . . .	43
4.5	Students- Primary, Junior, and Senior Secondary School in each LGA from year 2016/2017 to 2019/2020 . . . . .	45
4.6	Number of STEM Teachers from year 2016/2017 to 2019/2020 . . . . .	48
4.7	Statistics of Teacher's training from year 2016/2017 to 2019/2020 . . . . .	49
4.8	Statistics of operational computer labs in secondary schools from 2016/2017 to 2019/2020 Academic Sessions. . . . .	50
4.9	Statistics of internet connectivity in Lagos State institutions and Lagos State staff email regis- tration and usage from year 2018 to 2020. . . . .	51

6.1	Statistics on traffic to some tourist sites in Lagos State from 2017 to 2019 . . . . .	54
7.1	Statistics of Criminal Cases in Lagos State from year 2017 to 2019. . . . .	55
7.2	Lagos State Judiciary Statistics data from 2017 to 2020 . . . . .	56

## Acknowledgement

Our sincere gratitude goes to Mr. Governor, His Excellency, Babajide Olusola Sanwo-Olu of Lagos State. It is also very important to appreciate the contribution of the Commissioner MEPB, Sam Egube, who gave all necessary backing needed for this Spotlight on Lagos Statistics to see the light of the day.

The Permanent Secretary MEPB, Adetutu Liadi, for her unending support for the actualization of this publication.

We acknowledge the Director(LBS), Bashiru Temitayo Oseni-Ope, for allowing us carry out one of Data Bank Division's assigned responsibilities and in the same vein we salute all Heads of Division (LBS) as well as entire staff of LBS that contributed to the success of this Spotlight on Lagos Statistics which is an improvement of the Statistical Hotline publication.

## Chapter 1: Demography of Lagos State

Lagos State plays a vital role in the Nigerian economy and as a nation's commercial nerve centre, remains the economic, financial and commercial centre of Nigeria and the ECOWAS. Lagos economy, with an estimated population of over 25million is larger than any other economy in the ECOWAS sub-region. It is also the hub of Nigeria and West Africa's regional financial system, which is dominated by mega banks, insurance firms, micro-finance/community banks; discount houses; and the capital market.

**Table 1.1:** Demography of Lagos State

DESCRIPTION	2018	2019	2020
The State Size	3,577.28 Sq. Km	3,577.28 Sq. Km	3,577.28 Sq. Km
Land Mass	2,798 Sq. Km	2,798 Sq. Km	2,798 Sq. Km
Water Area	780 Sq. Km	780 Sq. Km	780 Sq. Km
Estimated Population Figure (M)	13,214,661	13,637,530	14,073,931
Estimated Population Figure (F)	12,401,042	12,797,876	13,207,408
Estimated Population Figure (Total)	25,615,703	26,435,406	27,281,339
Population Density	6,723 persons per Sq km	6,723.47 persons per Sq km	7,390 persons per Sq km
Annual Population Growth Rate	3.2%	3.2%	3.2%
Local Government with highest population projection	Alimosho - 2,987,306	Alimosho - 3,082,900	Alimosho - 3,181,553
Local Government with lowest population projection	Ibeju Lekki - 145,263	Ibeju Lekki - 149,911	Ibeju Lekki - 149,911
Average Household Size	5	5	5
GDP (Basic Price)		30.875 trillion	29.72 trillion

## Chapter 2: Transportation and Traffic Management

### 2.1 Improving Traffic Flow

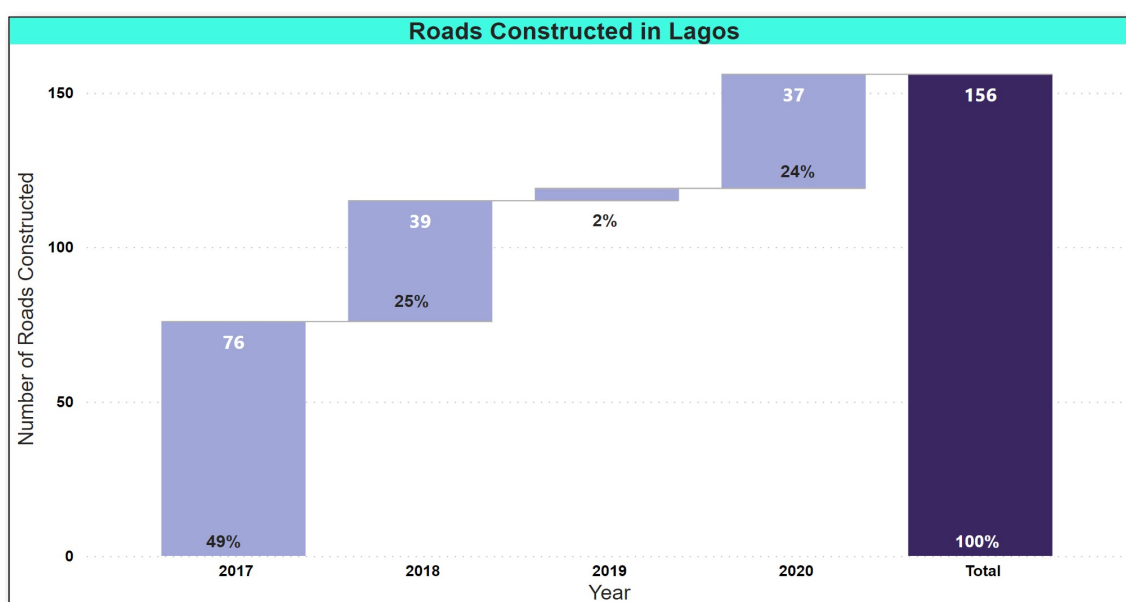
#### 2.1.1 Roads Constructed in Lagos State

This is a record of the roads constructed in Lagos State as recorded by the Ministry of Works and Infrastructure. Table 2.1 documents completed road projects within the Lagos Metropolis and Suburban areas

**Table 2.1:** Annual Road Constructed in Lagos State

DESCRIPTION	2017	2018	2019	2020
NUMBER OF ROADS CONSTRUCTED	76	39	4	37
TOTAL LENGTH OF ROAD CONSTRUCTED (KM)	79.18	37.999	5.392	22.99

*Source: Lagos State Ministry of Works and Infrastructure*



**Figure 2.1:** Trend of Road Constructed in Lagos State from 2017-2020

Fig 2.1 shows the trend of roads constructed in Lagos from 2017 - 2020. The year 2017 was the peak with about half of the total number of roads constructed (49%), within the 4 years contrast and the year 2019 had the least number of roads constructed.

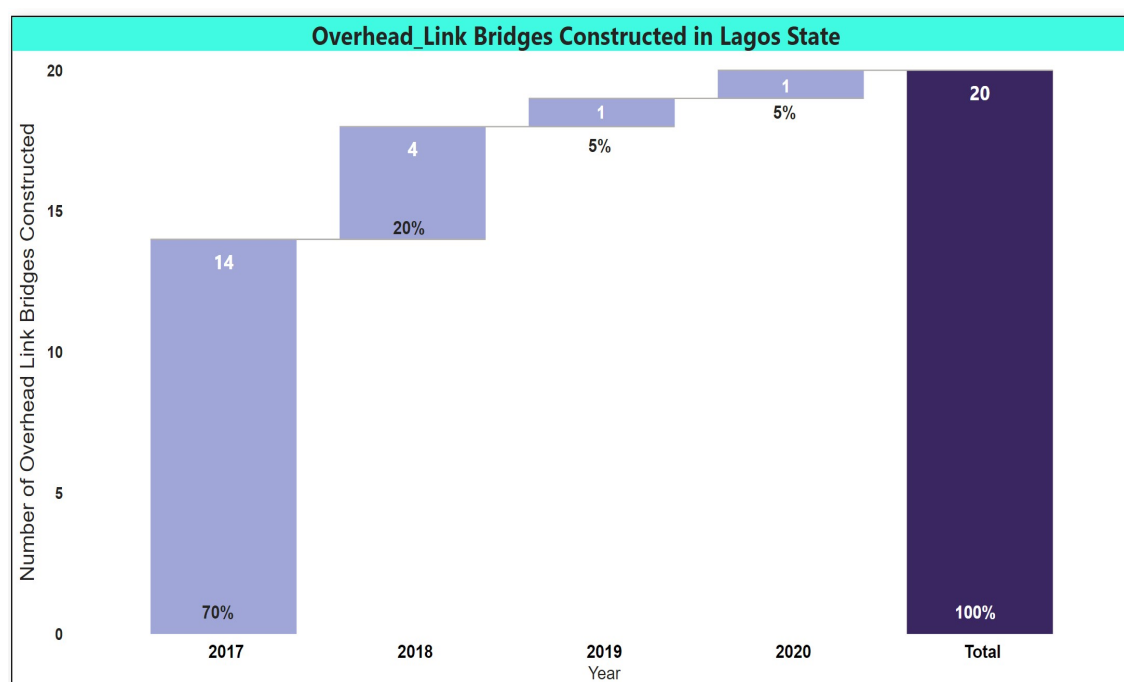
### 2.1.2 Overhead Link Bridges Constructed in Lagos State

This is a record of completed Overhead link bridges constructed in Lagos State; the link bridges loops different roads together in order to reduce traffic. Table 2.2 documents the number of overhead link bridges constructed as recorded by the Ministry of Works and infrastructure.

**Table 2.2:** Annual Statistics of Overhead Link Bridges Constructed in Lagos State

DESCRIPTION	2017	2018	2019	2020
NUMBER OF OVERHEAD LINK BRIDGES CONSTRUCTED	14	4	1	1

Source: Lagos State Ministry of Works and Infrastructure



**Figure 2.2:** Trend of Overhead link bridges constructed from 2018-2020

Fig 2.2 illustrates the trend of Overhead link bridges constructed in Lagos from 2017 - 2020. The year 2017 was the peak with more than two-thirds percent of the number constructed (70%) within the 4 years contrast.



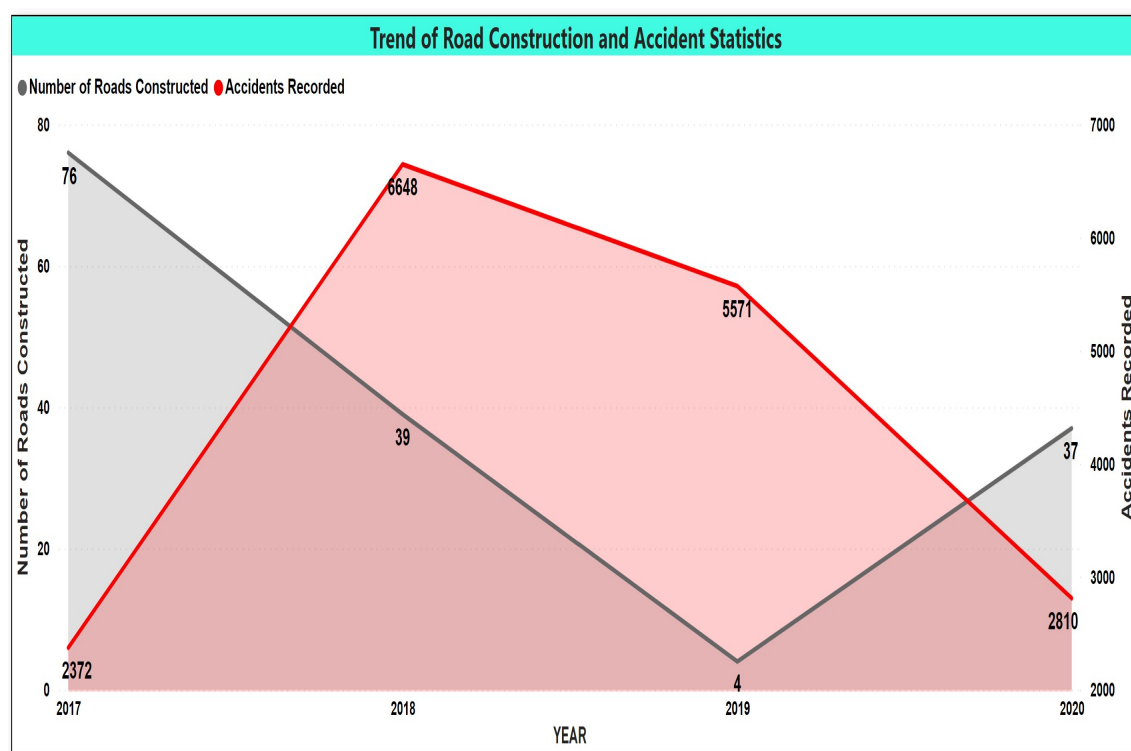
### 2.1.3 Roads Constructed and Accident Statistics

This records an interfile between road constructed in Lagos State and corresponding accident statistics as recorded by the Lagos State Ministry of Works and Infrastructure and the Lagos State Traffic Management Authority. It checks the drifts in both indicators to see if the two has corresponding effects.

**Table 2.3:** Annual Statistics of Road Constructed and Accidents Recorded

DESCRIPTION	2017	2018	2019	2020
NUMBER OF ROADS CONSTRUCTED	76	39	4	37
NUMBER OF PERSONS INVOLVED IN ROAD ACCIDENT	2372	6648	5571	2810

Source: Lagos State Ministry of Works and Infrastructure and LASTMA



**Figure 2.3:** Trend Interpolation of Road construction and Accident Statistics from 2018-2020

Fig 2.3 shows the interconnections of road constructed and accidents recorded from 2017 - 2020. The chart deduces that an increase in the number of roads constructed shows a corresponding decline in accident statistics and vice versa. The chart presumes that a change in one, results in an opposite change in the other.

## 2.2 Safety of Commuters

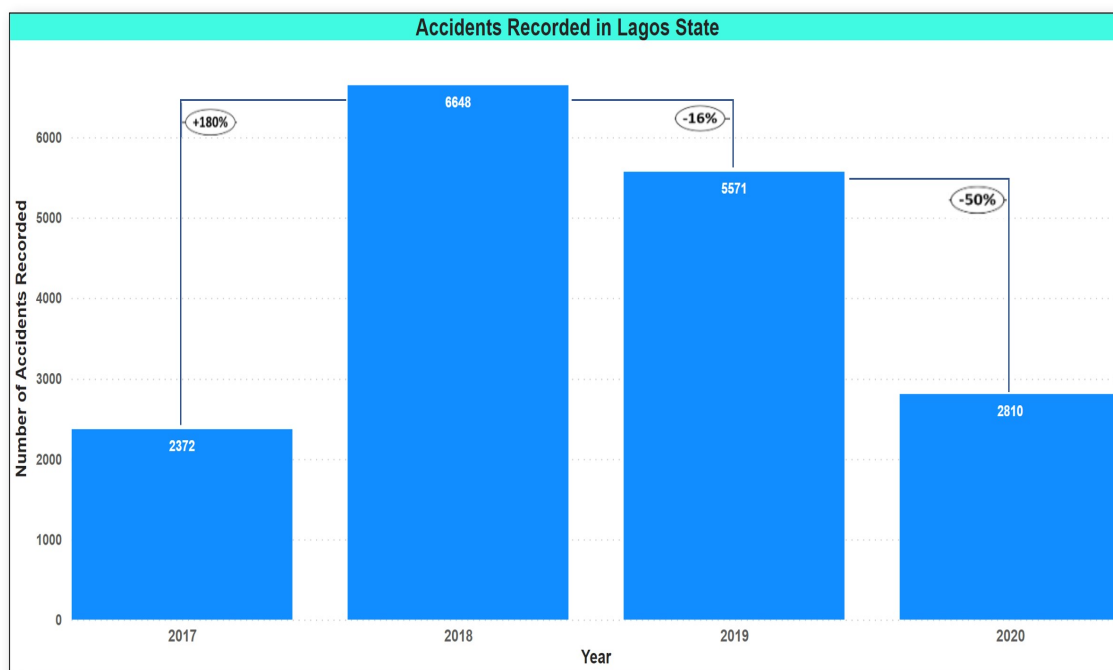
### 2.2.1 Accident Recorded in Lagos State

Road accidents statistics is the record of the number of persons involved in road accidents. It includes minor, serious and fatal cases of persons involved. It also incorporated the gender of casualty whether male or female. Table 2.4 documents the annual statistics of Road accident as recorded by the Lagos State Traffic Management Authority from 2017-2020.

**Table 2.4:** Annual Statistics on Road Accidents Recorded in Lagos State

DESCRIPTION	2017	2018	2019	2020
NUMBER OF PERSONS INVOLVED IN ROAD ACCIDENT	2372	6648	5571	2810

Source: Lagos State Traffic Management Agency (LASTMA)



**Figure 2.4:** Road Accidents recorded in Lagos State from 2017-2020

From Fig 2.4 above, we have the number of accidents recorded peaked in 2018; having a 180% increase from 2017, with a decline in 2019 and 2020.

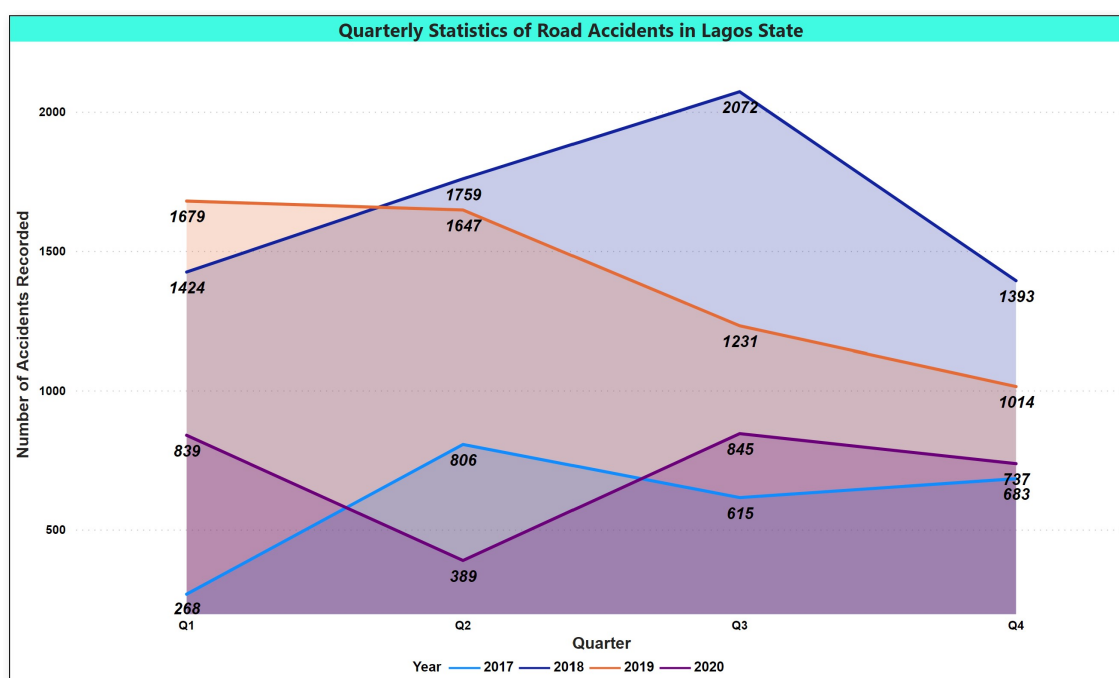
### 2.2.2 Quarterly Statistics of Accidents

This records the quarterly statistics of the road accident in Lagos State. Table 2.5 catalogues the number of accidents recorded in three months interval. Fig 2.5 illustrates the swing in number of accident recorded by quarter.

**Table 2.5:** Quarterly Statistics of Road Accidents Recorded in Lagos State

DESCRIPTION	2017	2018	2019	2020
Q1	268	1424	1679	839
Q2	806	1759	1647	389
Q3	615	2072	1231	845
Q4	683	1393	1014	737
TOTAL	2372	6648	5571	2810

Source: Lagos State Traffic Management Agency (LASTMA)



**Figure 2.5:** Trend of Quarterly Statistics of Road Accidents from 2017-2020

Fig 2.5 depicts no consistent quarterly trend in road accidents recorded. However, some years recorded more accidents than others.

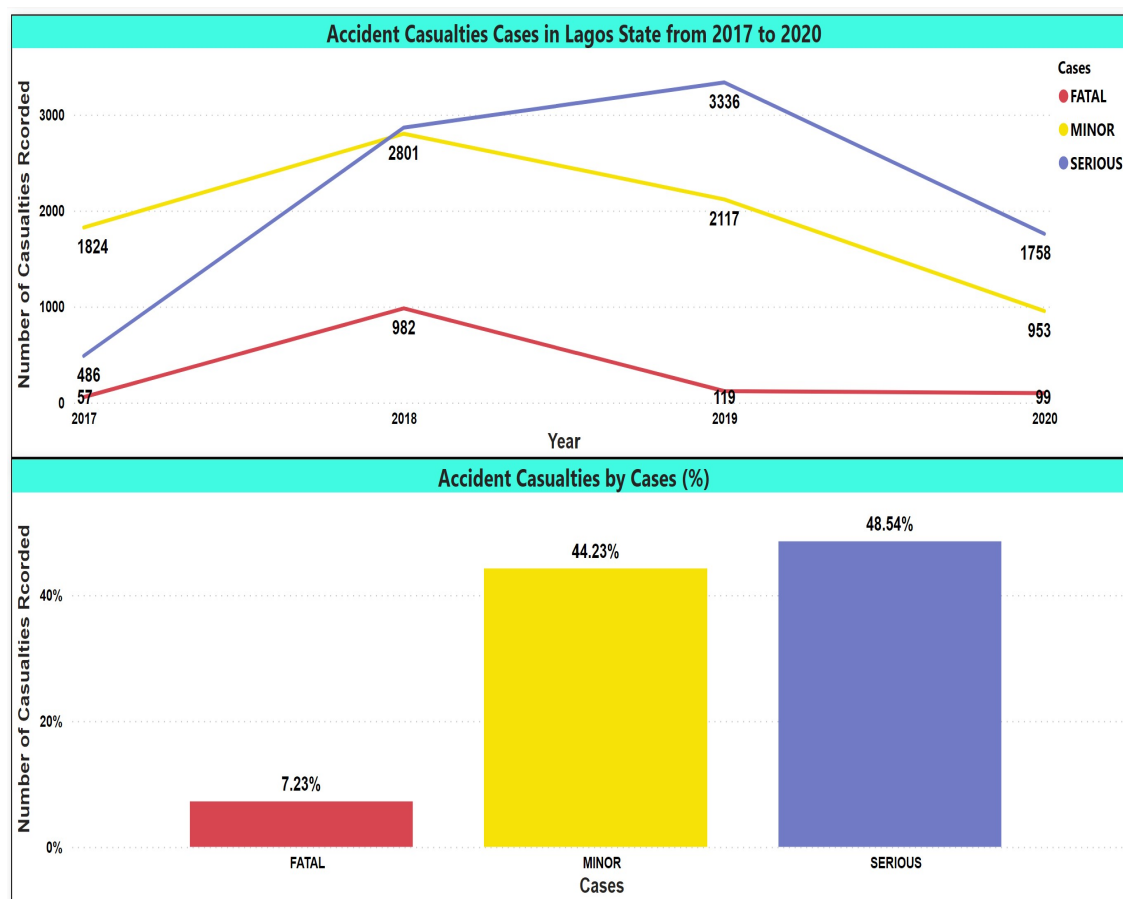
### 2.2.3 Road Accident by Casualty Cases

Accident cases by casualty records the number of casualties cases (Minor, Serious, Fatal) in road accidents as recorded by the Lagos State Traffic Management Authority. Table 2.6 documents the number of casualties cases of road accidents recorded across the a 4 year period.

**Table 2.6:** Annual Accident Statistics by Casualty

DESCRIPTION	2017	2018	2019	2020
FATAL	57	982	119	99
SERIOUS	486	2,865	3,336	1758
MINOR	1,824	2,801	2,117	953
<b>TOTAL</b>	<b>2,367</b>	<b>6,648</b>	<b>5,572</b>	<b>2810</b>

Source: Lagos State Traffic Management Agency (LASTMA)



**Figure 2.6:** Trend of Accidents Casualty cases from 2017-2020

Fig 2.6 shows that we have more records of serious accident casualty cases with a percentage of (49%), followed by minor cases (44%) with only a few fatal cases (7%).

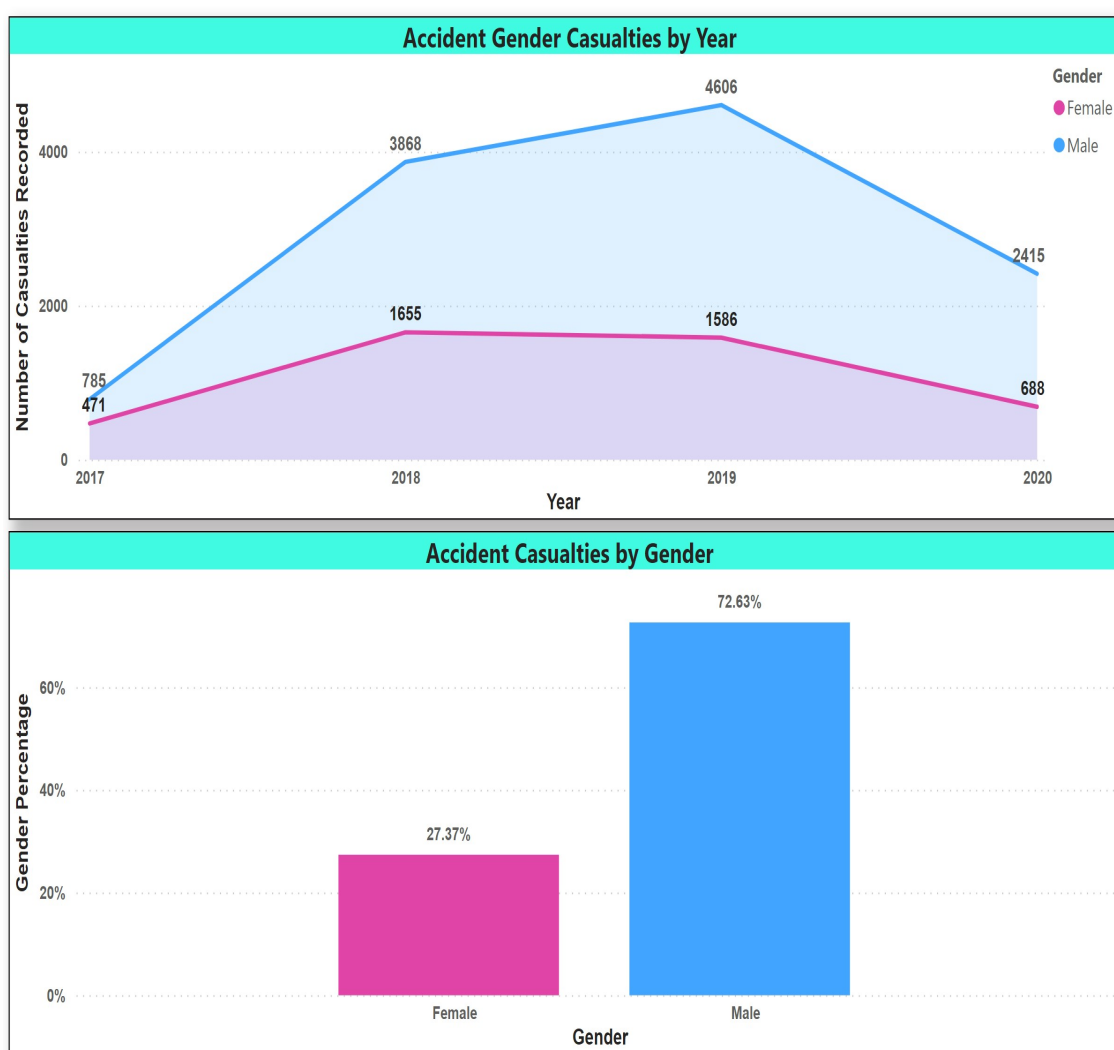
### 2.2.4 Road Accident by Gender

Accident casualty by cases records the number of casualties cases (Minor, Serious, Fatal) in road accident by Gender as recorded by the Lagos State Management Authority. Table 2.6 documents the casualties cases numbers of accidents recorded by year.

**Table 2.7:** Annual Accident Statistics by Gender

DESCRIPTION	2017	2018	2019	2020
MALE	785	3868	4606	2415
FEMALE	471	1655	1586	688

Source: Lagos State Traffic Management Agency (LASTMA)



**Figure 2.7:** Trend of Accidents Casualty by Gender from 2017-2020

Fig 2.7 illustrates a broad difference in the result recorded in accidents by gender, with the males having the higher percentage of (73%) in comparison to females (27%).

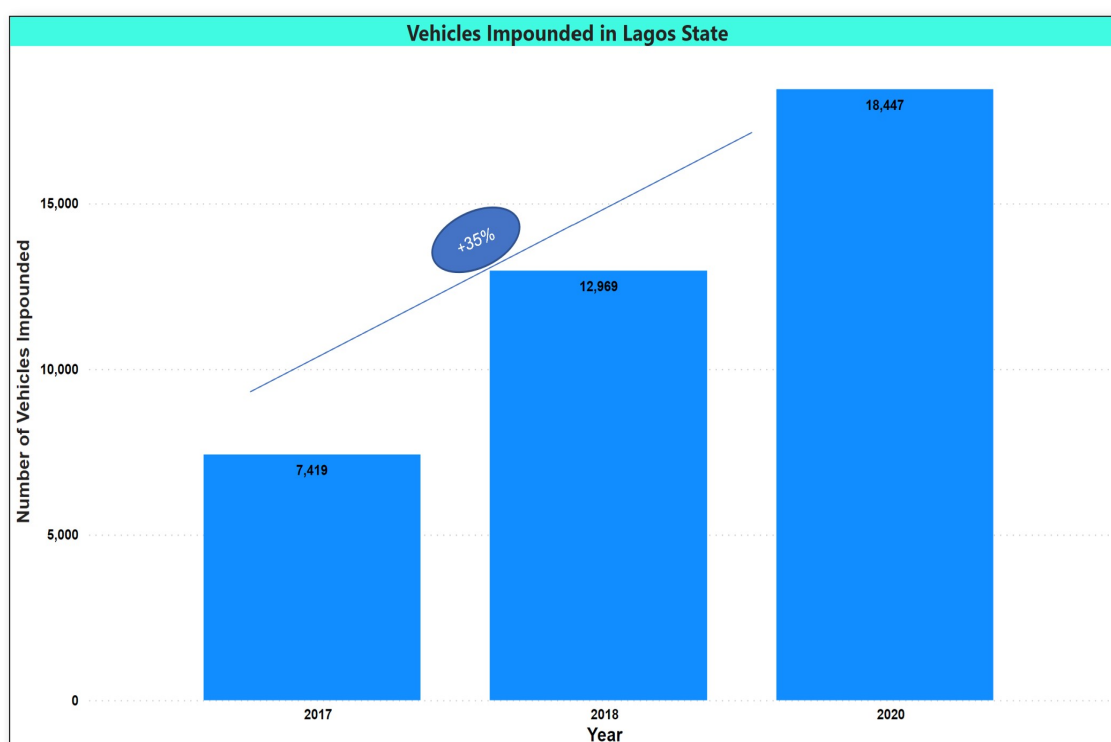
## 2.3 Compliance Level of Lagosian to Road Transportation

### 2.3.1 Vehicles Impounded

**Table 2.8:** Annual Statistics of Vehicles Impounded in Lagos State

DESCRIPTION	2017	2018	2019	2020
NUMBER OF VEHICLES IMPOUNDED	7419	12969	-	18447

Source: Lagos State Traffic Management Agency (LASTMA)



**Figure 2.8:** Chart of vehicles impounded from 2017-2020

The chart of vehicle impounded illustrates the trend of vehicles impounded in Lagos state from 2017- 2020, it shows that there has been a 35% increase in vehicles impounded since 2017.

## 2.3.2 Vehicular Offences

**Table 2.9:** Annual Statistics of Vehicular Offences in Lagos State

DESCRIPTION	2017	2018	2019	2020
NUMBER OF VEHICLES IMPOUNDED	8495	15121	21142	19463

Source: Lagos State Traffic Management Agency (LASTMA)

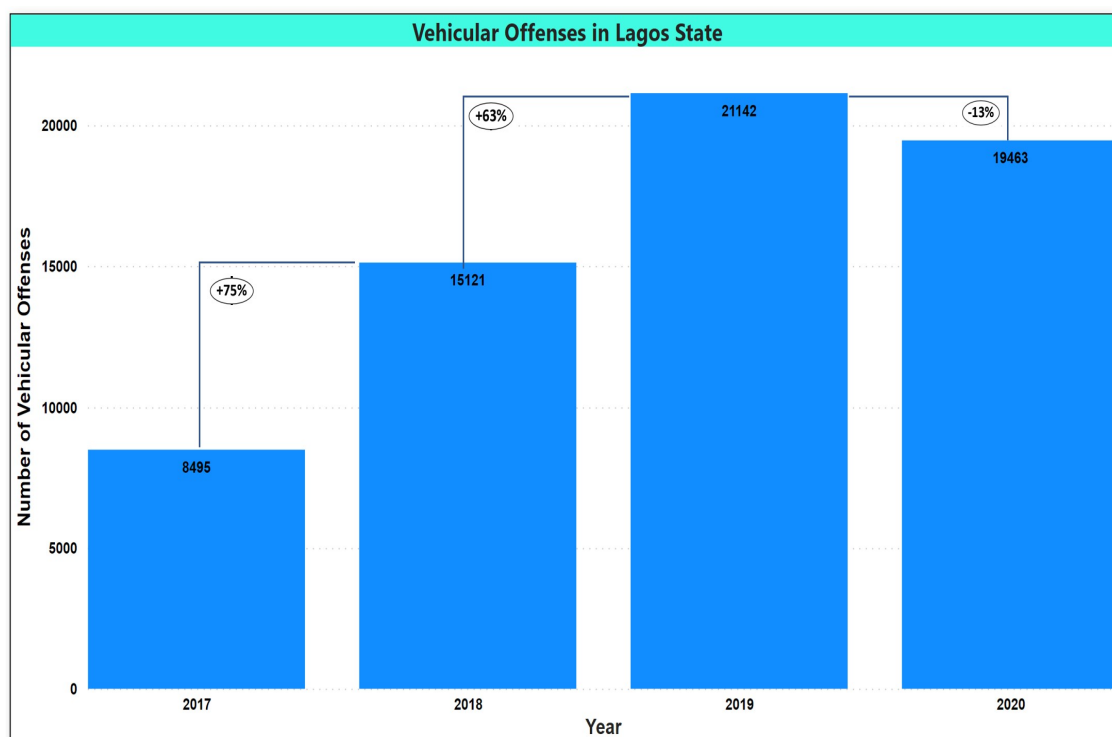
**Figure 2.9:** Chart of vehicular Offences from 2017-2020

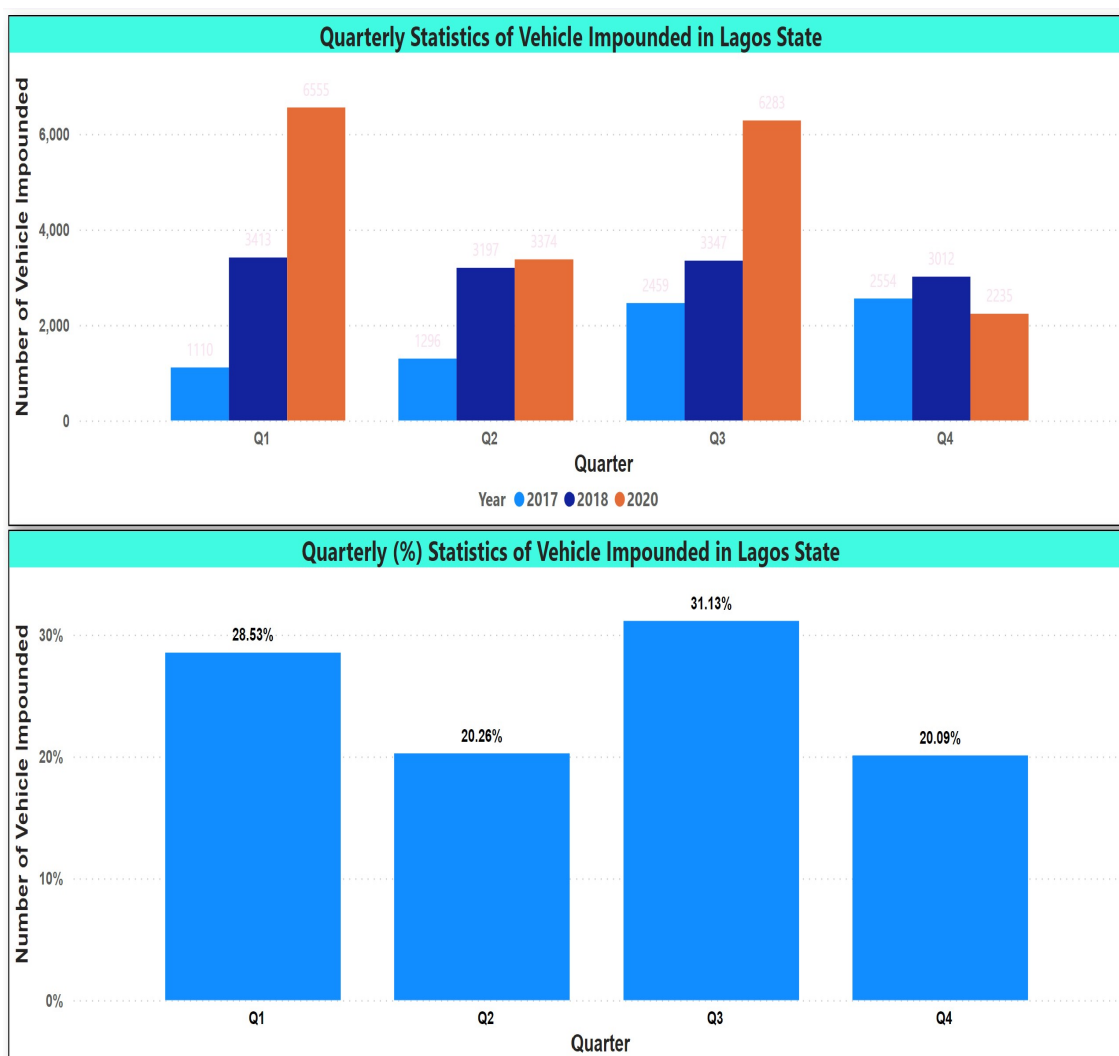
Fig 2.9 shows that 2019 recorded the highest number of vehicular offenses which is a 63% increase from the previous year, and a slight decrease in 2020.

### 2.3.3 Quarterly Statistics of Vehicles Impounded

**Table 2.10:** Quarterly Statistics of Vehicles Impounded in Lagos State

DESCRIPTION	2017	2018	2019	2020
<b>Q1</b>	1110	3413	-	6555
<b>Q2</b>	1296	3197	-	3374
<b>Q3</b>	2459	3347	-	6283
<b>Q4</b>	2554	3012	-	2235

Source: Lagos State Traffic Management Agency (LASTMA)



**Figure 2.10:** Chart and Trend of Quarterly Statistics of Vehicles Impounded from 2017-2020

Fig 2.10 shows that the 3rd quarter (July - September) has the highest number of vehicles impounded and it drops drastically in the last quarter of the year (October - December).

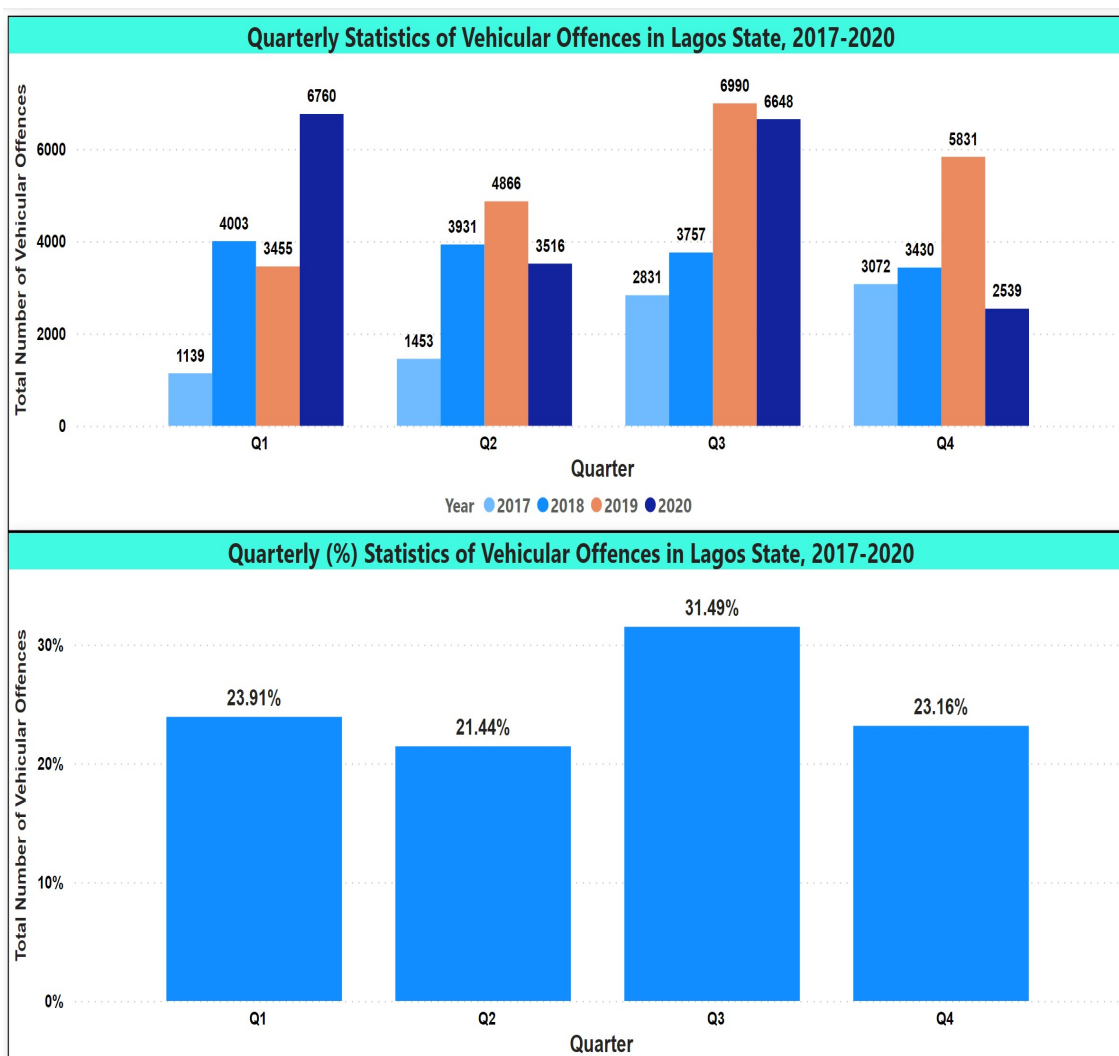


### 2.3.4 Quarterly Statistics of Vehicular Offences

**Table 2.11:** Quarterly Statistics of Vehicular Offences in Lagos State

DESCRIPTION	2017	2018	2019	2020
<b>Q1</b>	1139	4003	3455	6760
<b>Q2</b>	1453	3931	4866	3516
<b>Q3</b>	2831	3757	6990	6648
<b>Q4</b>	3072	3430	5831	2539

Source: Lagos State Traffic Management Agency (LASTMA)



**Figure 2.11:** Chart and Trend line of Quarterly Statistics of vehicular Offences from 2017-2020

Fig 2.11 shows that the 3rd quarter (July - September) has the highest number of vehicular offences which is followed by a reduction in the last quarter of the year (October - December).

## 2.4 Operating Smart Transportation Network

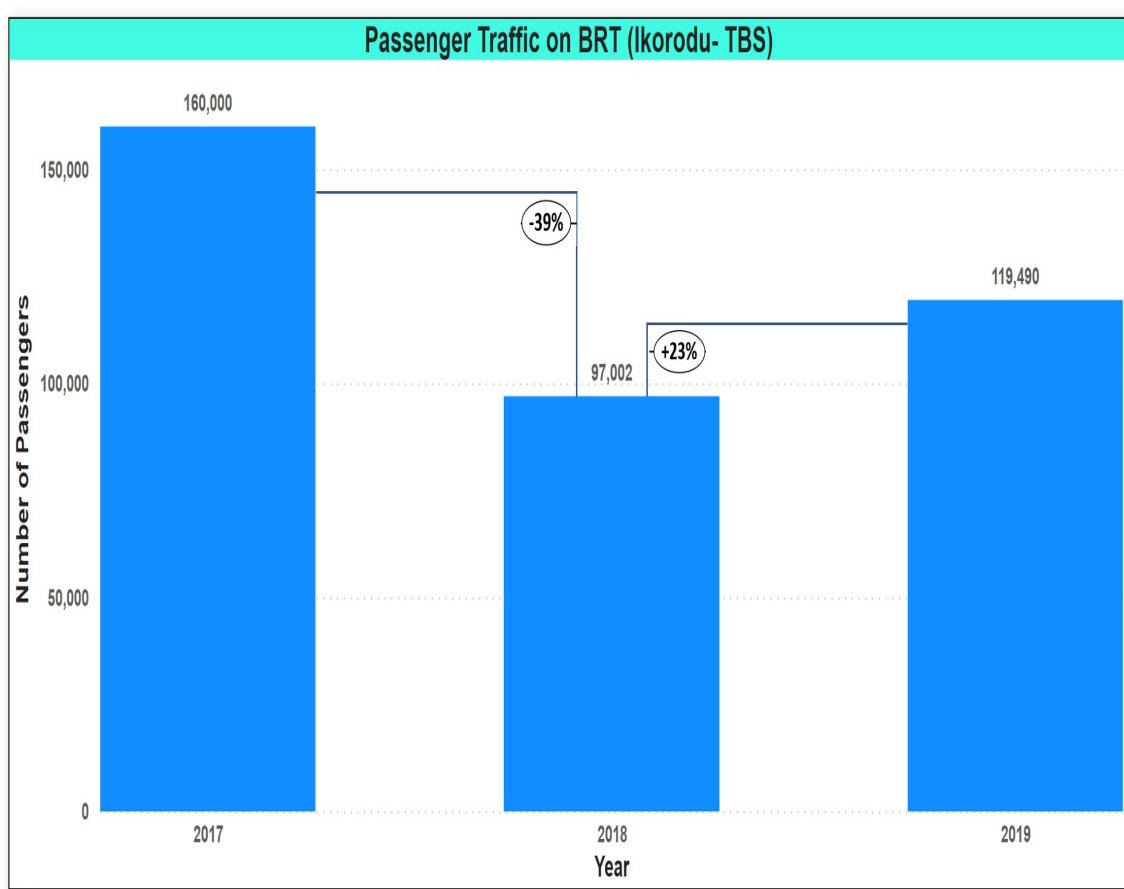
### 2.4.1 Road Transportation

The Lagos State Bus Rapid Transit (BRT) currently have 29 designated bus stops which originates from Ikorodu to TBS with about 300 buses designated to the route and an average passenger Traffic of 125,000.

**Table 2.12:** BRT Passengers

DESCRIPTION	2017	2018	2019
NUMBER OF PASSENGERS	160,000	97,002	119,490

Source: Lagos Metropolitan Area Transport Authority



**Figure 2.12:** Chart of Passenger Traffic on BRT, 2017- 2019

The figure above shows a decrease of 39% in the number of passenger traffic of BRT from 2017 and an increase of 23% in 2019.

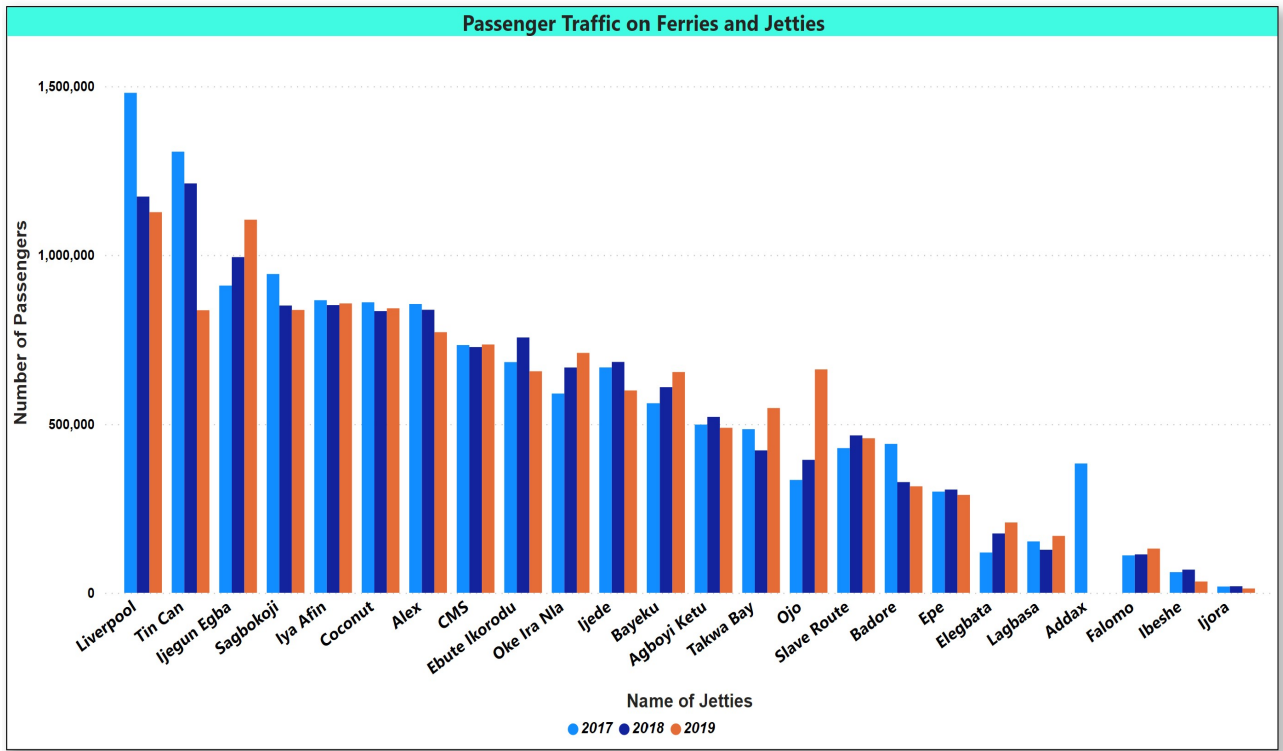
### 2.4.2 Water Transportation

The Lagos state waterways authority records passenger traffic on 27 registered ferries and jetties in Lagos State.

**Table 2.13:** Annual Passenger Traffic on Ferries and Jetties in Lagos State

S/N	NAME OF JETTIES	NUMBER OF PASSENGER			
		2017	2018	2019	Total (%)
1	Addax	383,332	-	-	1.00%
2	Alex	854,546	837,425	771,079	6.16%
3	Agboyi Ketu	498,633	521,448	489,073	3.78%
4	Badore	441,370	328,175	315,723	2.71%
5	Bayeku	561,928	609,530	652,875	4.56%
6	CMS	732,807	726,929	734,531	5.49%
7	Coconut	859,631	833,490	841,780	6.34%
8	Elegbata	119,465	175,916	208,535	1.26%
9	Epe	299,922	306,060	290,246	2.24%
10	Falomo	110,987	113,879	131,058	0.89%
11	Ijede	666,543	682,823	599,776	4.88%
12	Ijegun Egba	909,125	993,541	1,104,421	7.52%
13	Ijora	18,668	19,448	12,813	0.13%
14	Iya Afin	865,763	851,305	856,269	6.44%
15	Lagbasa	152,288	127,590	168,751	1.12%
16	Liverpool	1,480,432	1,172,957	1,126,749	9.46%
17	Ebute Ikorodu	682,337	755,367	655,169	5.24%
18	Metro Ferry	-	-	-	0.00%
19	Origin	-	-	-	0.00%
20	Ojo	334,559	394,106	660,731	3.47%
21	Oworonshoki	-	-	-	0.00%
22	Ibeshe	61,270	68,713	33,512	0.41%
23	Oke Ira Nla	590,629	666,338	709,595	4.92%
24	Sagbokoji	943,421	849,962	836,938	6.58%
25	Slave Route	428,914	466,548	458,078	3.37%
26	Takwa Bay	485,004	422,125	547,698	3.64%
27	Tin Can	1,306,055	1,211,935	836,023	8.39%
<b>Total</b>		<b>13,787,629</b>	<b>13,135,610</b>	<b>13,041,423</b>	<b>100%</b>

Source: Lagos State Waterways Authority (LASWA)



**Figure 2.13:** Chart of Passenger Traffic on Ferries and Jetties from 2017-2019

Figure 2.13 shows the distribution of a total of 39,964,662 passengers on ferries and jetties in Lagos state; with Liverpool having the highest flux of passengers (9.46%) and Ijora having the least (0.13%).

## Chapter 3: Health and Environment

### 3.1 Access to Healthcare

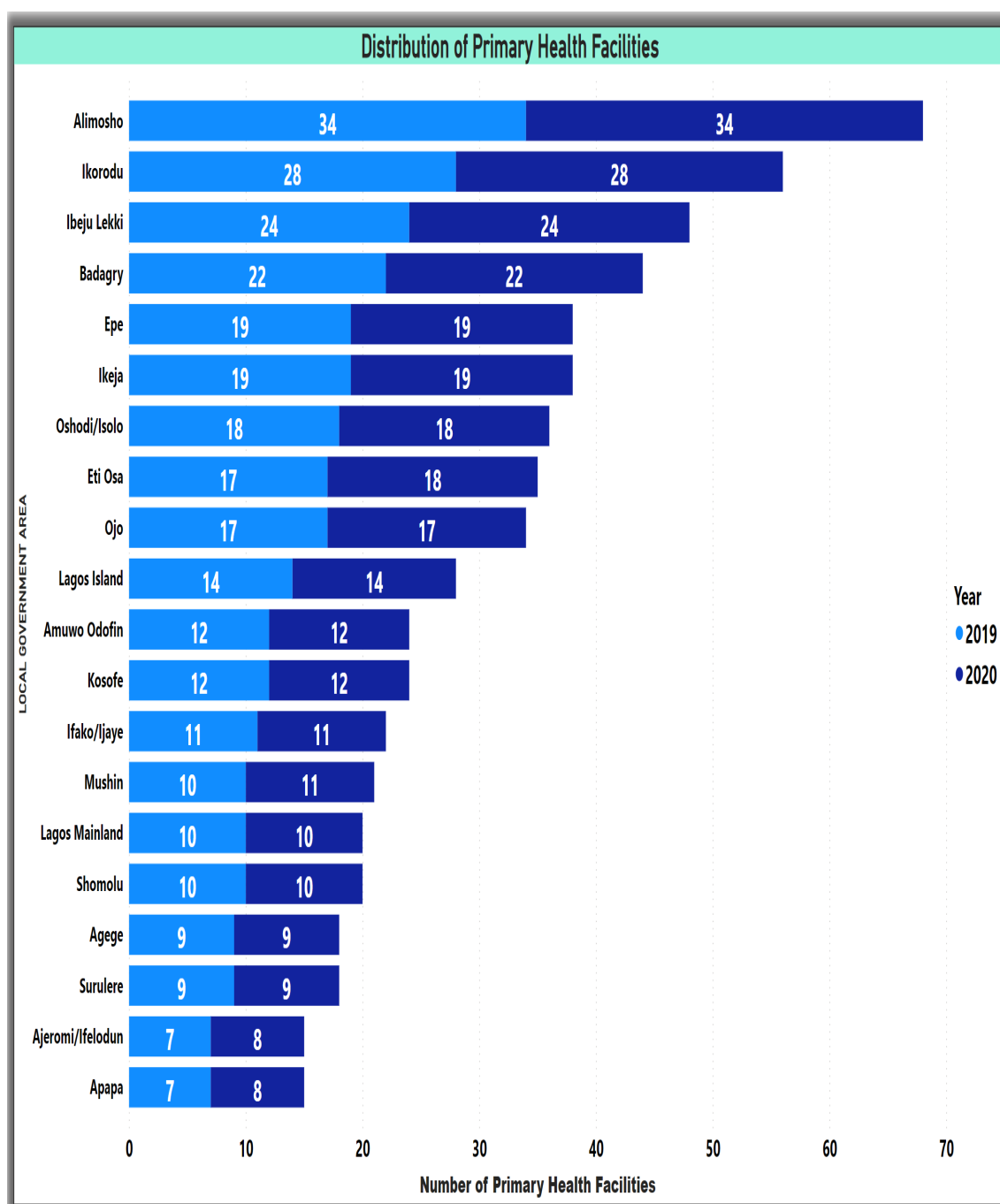
#### 3.1.1 Primary Health Facilities

This section records the Primary Health Facilities across Lagos State in all the Local Governments. Primary health care (PHC) is the first level of contact for individuals, the family, and the community with the state health system and addresses the main health problems in the community whilst providing health promotion, preventive, curative, and rehabilitative services accordingly.

**Table 3.1:** Statistics of Primary Health Facilities

S/N	Local Government Area	2019	2020
1	Eti Osa	17	18
2	Ikeja	19	19
3	Ifako/Ijaye	11	11
4	Alimosho	34	34
5	Agege	9	9
6	Amuwo Odofin	12	12
7	Ikorodu	28	28
8	Epe	19	19
9	Shomolu	10	10
10	Lagos Island	14	14
11	Kosofe	12	12
12	Mushin	10	11
13	Oshodi/Isolo	18	18
14	Ibeju Lekki	24	24
15	Surulere	9	9
16	Ojo	17	17
17	Lagos Mainland	10	10
18	Badagry	22	22
19	Apapa	7	8
20	Ajeromi/Ifelodun	7	8
<b>Total</b>		<b>309</b>	<b>313</b>

*Source: Lagos State Primary Health Care Board*



**Figure 3.1:** Distribution of Primary Health Facilities 2019 and 2020

Figure 3.1 analyses the distribution of primary health facilities across all Local Governments Areas for years 2019 and 2020. Alimosho has the highest number of Primary Health Centres which is 34. In 2020, one Primary Health Centre each was commissioned in Eti Osa, Mushin, Ajeromi/Ifelodun, and Apapa.

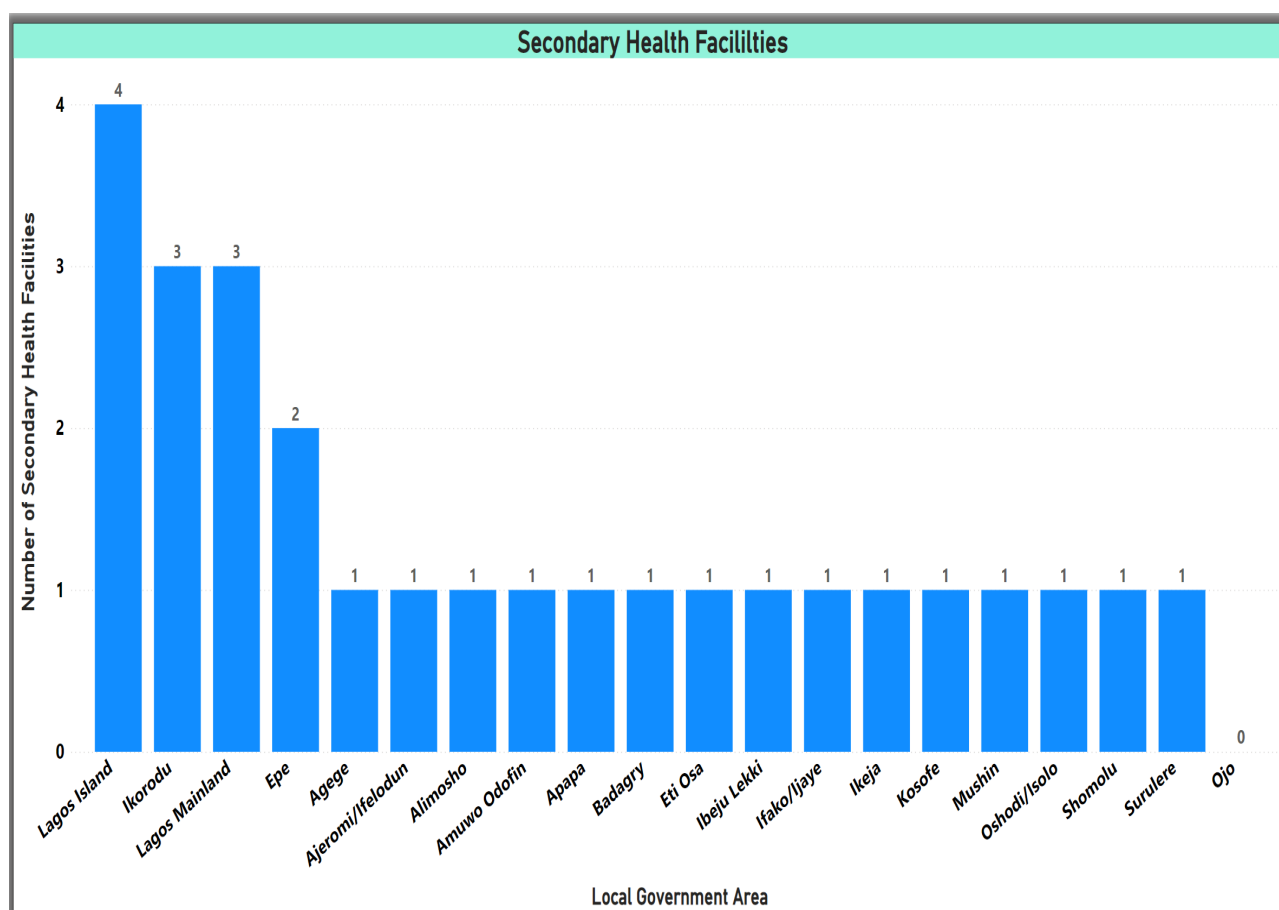
### 3.1.2 Secondary and Tertiary Health Facilities

The distribution of the Secondary and Tertiary Health facilities across all Local Government Areas in the State is as shown in Table 3.2. Lagos State has only one Tertiary Health Facility which is located in Ikeja Local Government Area.

**Table 3.2:** Statistics of Secondary and Tertiary Health Facilities

S/N	Local Government Area	Secondary Health Facilities	Tertiary health Facilities
1	Eti Osa	1	0
2	Ikeja	1	1
3	Ifako/Ijaye	1	0
4	Alimosho	1	0
5	Agege	1	0
6	Amuwo Odofin	1	0
7	Ikorodu	3	0
8	Epe	2	0
9	Shomolu	1	0
10	Lagos Island	4	0
11	Kosofe	1	0
12	Mushin	1	0
13	Oshodi/Isolo	1	0
14	Ibeju Lekki	1	0
15	Surulere	1	0
16	Ojo	0	0
17	Lagos Mainland	3	0
18	Badagry	1	0
19	Apapa	1	0
20	Ajeromi/Ifelodun	1	0
<b>Total</b>		<b>27</b>	<b>1</b>

*Source: Lagos State Ministry of Health*



**Figure 3.2:** Distribution of Secondary Health Facilities in Lagos

Figure 3.2 shows the distribution of Secondary Health Facilities also refer to as General hospitals across Lagos State. Lagos Island LGA has the highest secondary health facilities which are four while Ojo LGA does not have any.



## 3.2 Maternal Health

### 3.2.1 Statistics of Live Birth

A Live Birth simply means a birth at which a child is born alive. Table 3.3 details the Live Birth records across all the Secondary and Tertiary Health Facilities in Lagos State from the year 2017 to the year 2020.

**Table 3.3:** Statistics of Live Births Recorded across Secondary Health Facilities

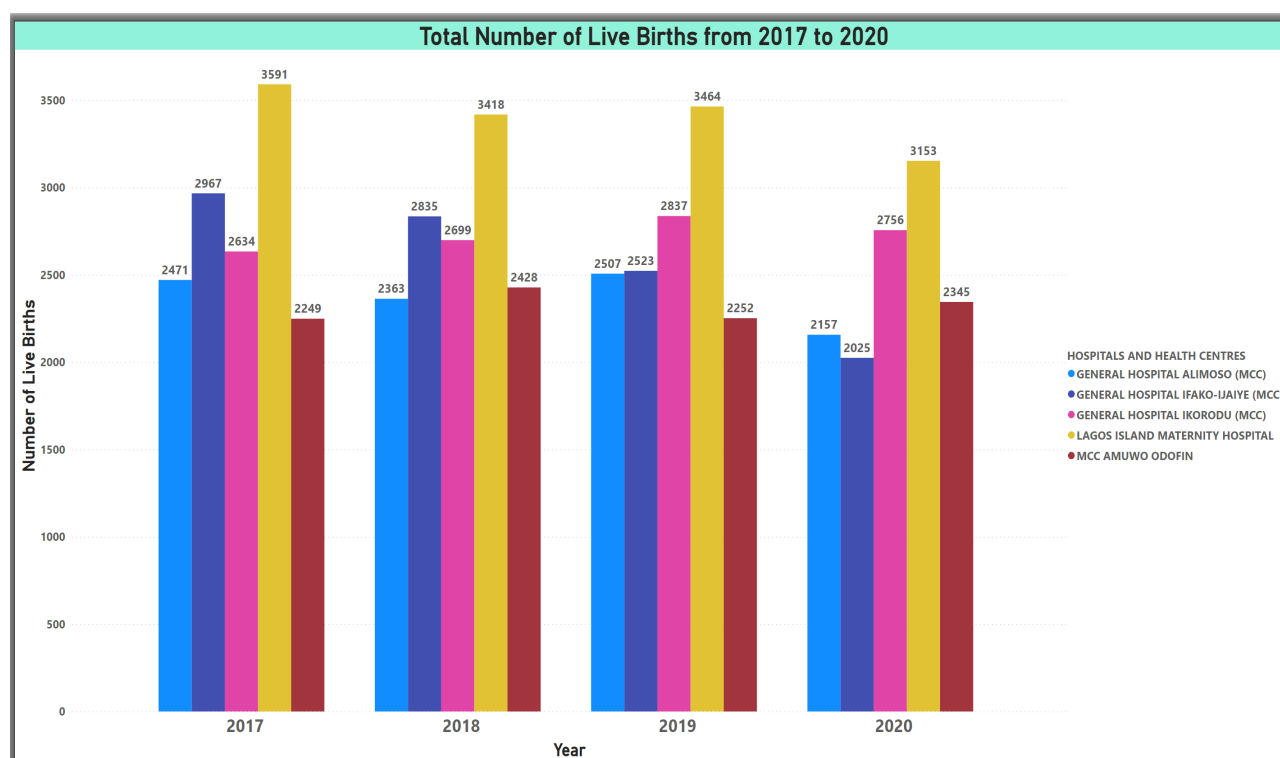
S/N	Hospitals and Health Centres	2017		2018		2019		2020	
		Male	Female	Male	Female	Male	Female	Male	Female
1	Lagos Island Maternity Hospital	1928	1663	1769	1649	1873	1591	1680	1473
2	LASUTH	N/A	N/A	N/A	N/A	190	214	442	403
3	General Hospital Epe	309	306	400	418	475	457	370	351
4	General Hospital Badagry	482	518	483	434	475	436	433	411
5	General Hospital Gbagada	796	963	859	843	933	945	795	827
6	General Hospital Ikorodu (MCC)	1357	1277	1413	1286	1488	1349	1414	1342
7	General Hospital Isolo (MCC)	928	945	1094	1004	962	886	712	696
8	General Hospital Ajeromi (MCC)	465	419	405	374	447	375	442	451
9	General Hospital Agbowa	57	46	70	80	76	83	77	92
10	General Hospital Orile-Agege	834	804	811	839	876	803	774	769
11	General Hospital Surulere (MCC)	1094	1010	1015	1002	1094	1086	879	852
12	General Hospital Apapa	70	57	56	58	79	46	65	52
13	General Hospital Mushin	228	249	263	243	265	260	200	202
14	General Hospital Shomolu	376	352	309	304	303	326	309	303
15	General Hospital Ifako-Ijaiye (MCC)	1485	1482	1472	1363	1283	1240	1042	983
16	General Hospital Alimosho (MCC)	1237	1234	1245	1118	1296	1211	1088	1069
17	General Hospital Ibeju-Lekki	444	458	484	435	498	442	290	291
18	Onikan Health Centre	199	207	254	276	363	272	310	336
19	General Hospital Ijeda	392	342	436	408	449	366	86	77
20	Ketu-Ejinrin Health Centre	9	10	11	9	12	11	82	57
21	Harvey Road Health Centre	313	342	350	343	369	367	313	273
22	Ebute Metta							86	77

*Continued on next page*

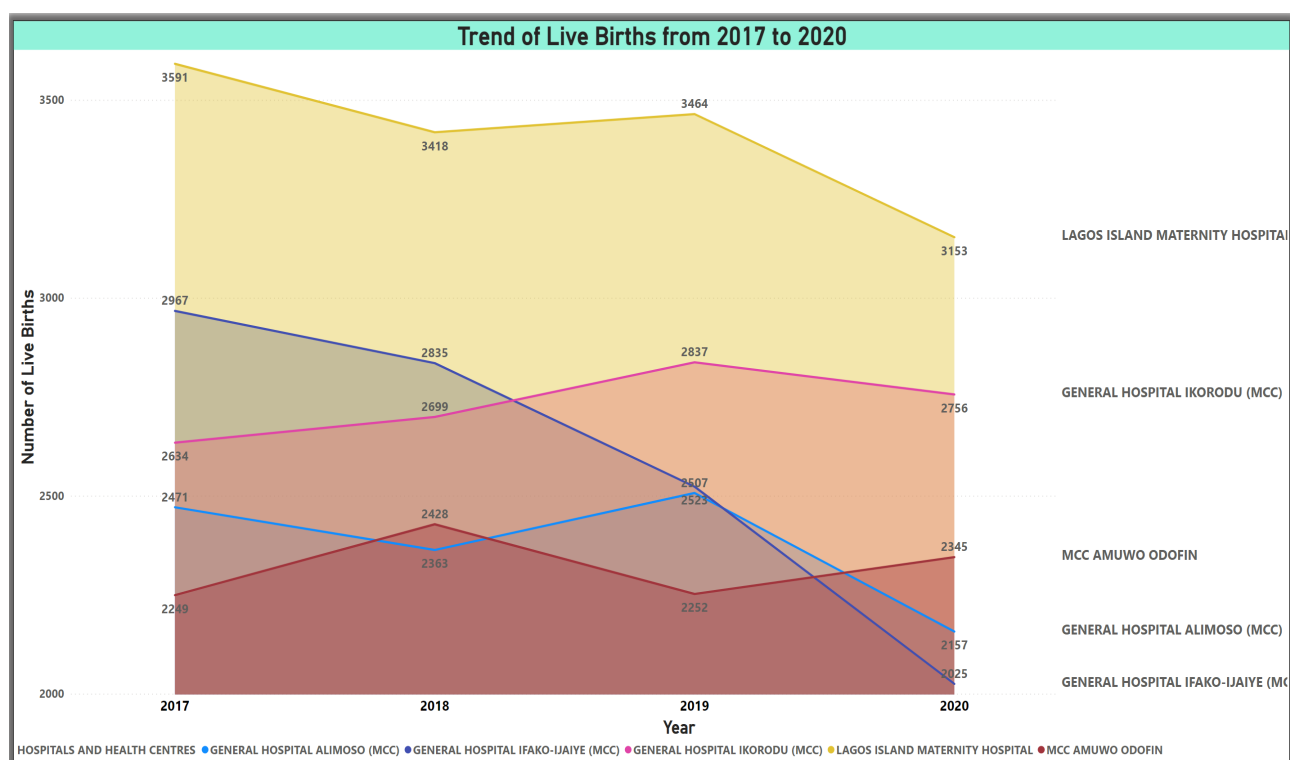
Table 3.3 – Continued from previous page

S/N	Hospitals and Health Centres	2017		2018		2019		2020	
		Male	Female	Male	Female	Male	Female	Male	Female
23	MCC Amuwo Odofin	1201	1048	1256	1172	1170	1082	1241	1104
24	MCC Eti Osa Ajah					164	145	867	917
	<b>Total</b>	<b>14,204</b>	<b>13,732</b>	<b>14,455</b>	<b>13,658</b>	<b>15,140</b>	<b>13,993</b>	<b>14,339</b>	<b>13,718</b>

Source: Lagos State Ministry of Health



**Figure 3.3:** Statistical Analysis of Live Births across 5 Secondary Health Facilities in Lagos State from year 2017 to 2020



**Figure 3.4:** Trend of Live Births recorded Secondary Health Facilities in Lagos State from year 2017 to 2020.

Figures 3.3 and 3.4 analyze the live births cases at the secondary health facilities with the highest number of live births recorded. Lagos Island Maternity Hospital has consistently recorded the highest number of Live Births in the state over the 4years period.

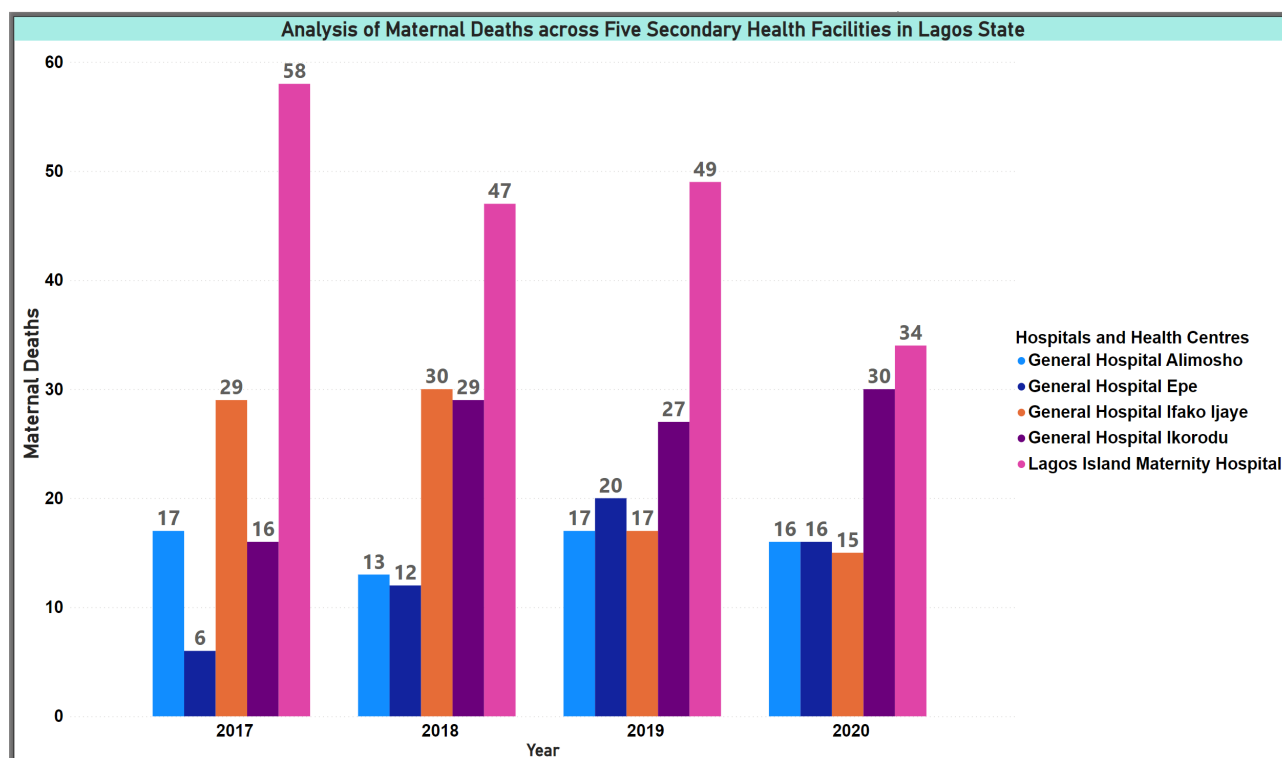
### 3.2.2 Maternal Deaths

Maternal death or maternal mortality is defined by the World Health Organization (WHO) as “the death of a woman while pregnant or within 42 days of termination of pregnancy, irrespective of the duration and site of the pregnancy, from any cause related to or aggravated by the pregnancy or its management but not from accidental or incidental causes”. In simpler words, maternal deaths record deaths of females related to pregnancy, either during pregnancy, at childbirth, or post-birth. Table 3.4 shows the number of maternal death cases recorded at the secondary health facilities in Lagos state for the year 2017 to the year 2020.

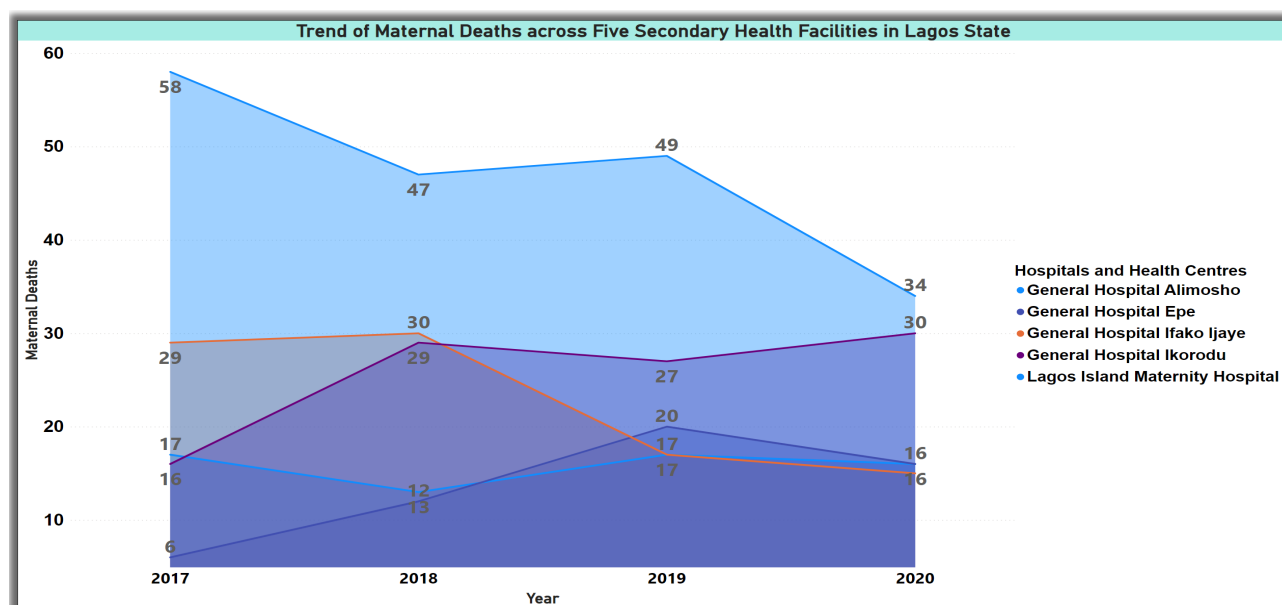
**Table 3.4:** Statistics of Maternal Deaths

S/N	Hospitals and Health Centres	2017	2018	2019	2020
1	Lagos Island Maternity Hospital	58	47	49	34
2	LASUTH	N/A	N/A	2	7
3	General Hospital Epe	6	12	20	16
4	General Hospital Badagry	10	11	11	6
5	General Hospital Gbagada	11	7	11	9
6	General Hospital Ikorodu	16	29	27	30
7	General Hospital Isolo	5	7	10	5
8	General Hospital Ajeromi	14	11	12	8
9	General Hospital Agbowo	1	2	2	-
10	General Hospital Orile Agege	10	9	14	13
11	General Hospital Surulere	11	3	7	2
12	General Hospital Apapa	-	2	-	1
13	General Hospital Mushin	3	1	-	3
14	General Hospital Somolu	4	2	-	1
15	General Hospital Ifako Ijaye	29	30	17	15
16	General Hospital Alimosho	17	13	17	16
17	General Hospital Ibeju Lekki	9	2	15	7
18	Onikan Health Centre	1	-	4	1
19	General Hospital Ijede	3	2	6	1
20	Ketu-Ejirin Health Centre	-	-	-	-
21	Harvey Road Health Centre	1	1	3	4
22	MCC Amuwo Odofin	2	9	9	13
23	MCC ETI OSA AJAH	-	-	2	4
<b>Total</b>		<b>211</b>	<b>200</b>	<b>236</b>	<b>196</b>

Source: Lagos State Ministry of Health



**Figure 3.5:** Statistical Analysis of Maternal Deaths recorded across 5 Secondary Health Facilities in Lagos State



**Figure 3.6:** Trend of Maternal Deaths across Secondary Health Facilities in Lagos State from year 2017 to 2020.

Figure 3.5 and Figure 3.6 analyze the trends of maternal death cases recorded at the five secondary health facilities with the highest number of maternal deaths recorded. secondary health facilities in Lagos state from the year 2017 to the year 2020. Lagos Island has recorded the highest number of Maternal Deaths in Lagos State.

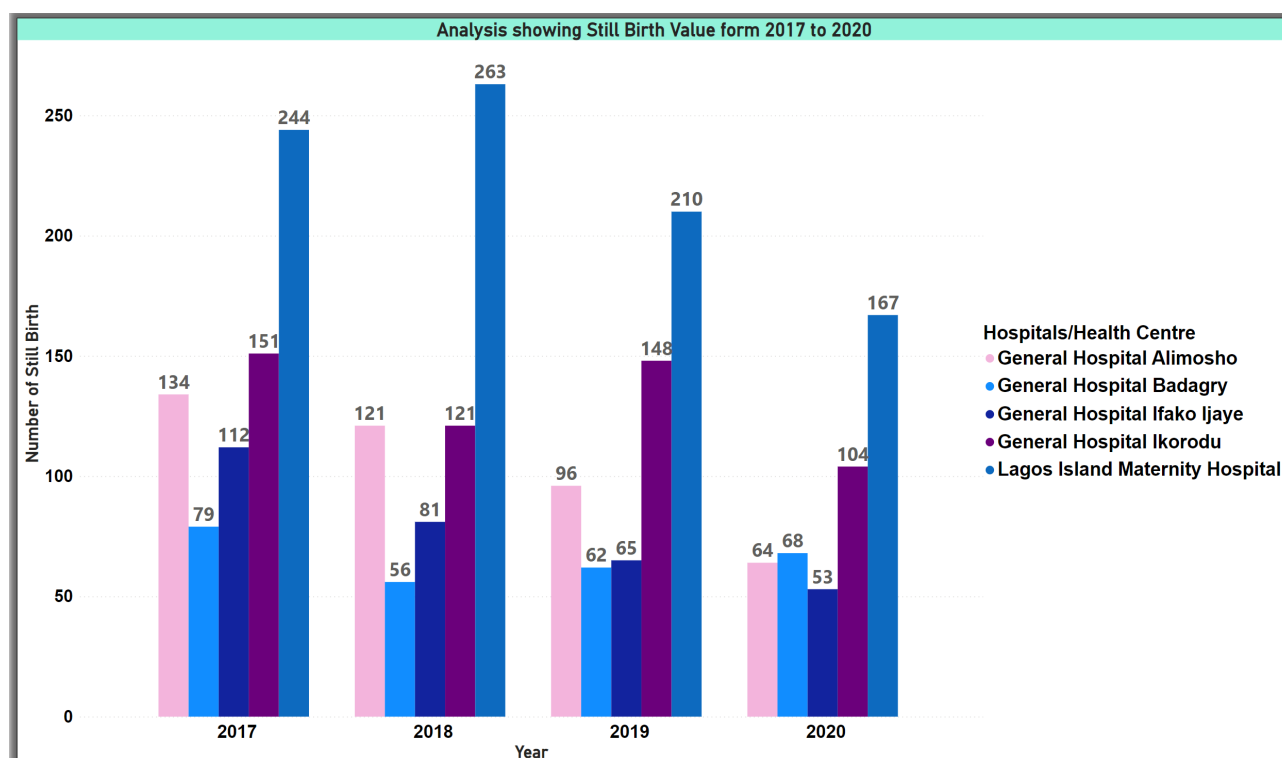
### 3.2.3 Still Birth

Still birth is the death of a foetus after 20 weeks of pregnancy. Table 3.5 is a well-detailed statistics of Still Birth across the Secondary Health Facilities and Tertiary Health Facilities in Lagos State.

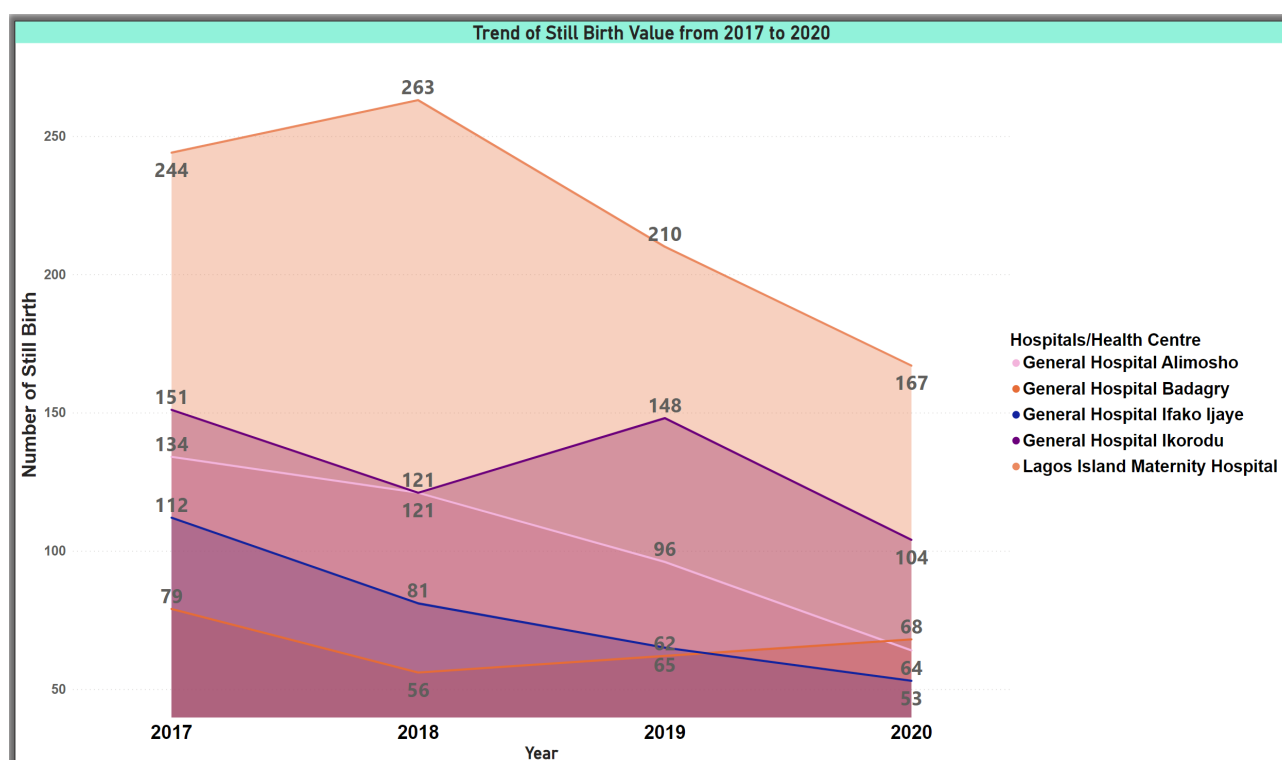
**Table 3.5:** Statistics of Still Birth Value across Lagos State

S/N	Hospitals/Health Centre	2017		2018		2019		2020	
		Male	Female	Male	Female	Male	Female	Male	Female
1	Lagos Island Maternity Hospital	125	119	138	125	105	105	96	71
2	LASUTH	N/A	N/A	N/A	N/A	13	12	7	13
3	General Hospital Epe	25	23	31	34	47	31	15	25
4	General Hospital Badagry	48	31	34	22	29	33	37	31
5	General Hospital Gbagada	27	32	13	14	18	22	9	8
6	General Hospital Ikorodu	76	75	64	57	85	63	54	50
7	General Hospital Isolo	17	23	29	20	33	31	17	15
8	General Hospital Ajeromi	23	21	31	15	22	25	21	19
9	General Hospital Agbowo	3	5	3	4	3	4	4	4
10	General Hospital Orile Agege	6	4	16	11	12	13	12	11
11	General Hospital Surulere	29	22	22	17	27	21	15	12
12	General Hospital Apapa	3	1	3	3	3	2	1	3
13	General Hospital Mushin	2	8	10	8	5	4	3	5
14	General Hospital Somolu	7	3	5	1	9	3	6	10
15	General Hospital Ifako Ijaye	49	63	43	38	42	23	28	25
16	General Hospital Alimosho	74	60	62	59	52	44	39	25
17	General Hospital Ibeju Lekki	30	33	31	32	32	33	33	16
18	Onikan Health Centre	3	8	6	8	7	5	10	6
19	General Hospital Ijede	13	7	16	9	12	6	7	7
20	Ketu-Ejirin Health Centre	-	2	-	-	-	-	2	1
21	Harvey Road Health Centre	20	9	15	9	13	10	9	8
22	MCC Amuwo Odofin	31	22	34	22	37	23	27	23
	<b>Total</b>	<b>611</b>	<b>571</b>	<b>606</b>	<b>508</b>	<b>606</b>	<b>513</b>	<b>452</b>	<b>388</b>

Source: Lagos State Ministry of Health



**Figure 3.7:** Statistical Analysis of Still Birth value across 5 Secondary Health Facilities in Lagos State from year 2017 to 2020



**Figure 3.8:** Trend of Still Birth value of 5 Secondary Health Facilities in Lagos State from year 2017 to 2020

Figure 3.7 and 3.8 shows the analysis of Still births recorded in secondary health facilities from the year 2017 to the year 2020. Lagos Island maternity hospital has consistently recorded the highest still birth occurrences over the reporting years but there had been a reduction in the number of occurrences since the year 2019.

### 3.2.4 Neonatal Deaths

Neonatal mortality refers to the death of a baby in the first 28 days of life. Early neonatal mortality refers to death before 7 days while late neonatal mortality to death on days 7-28. Immunization of pregnant women has been proven to be beneficial to the mother as well as the infant by decreasing morbidity and mortality.

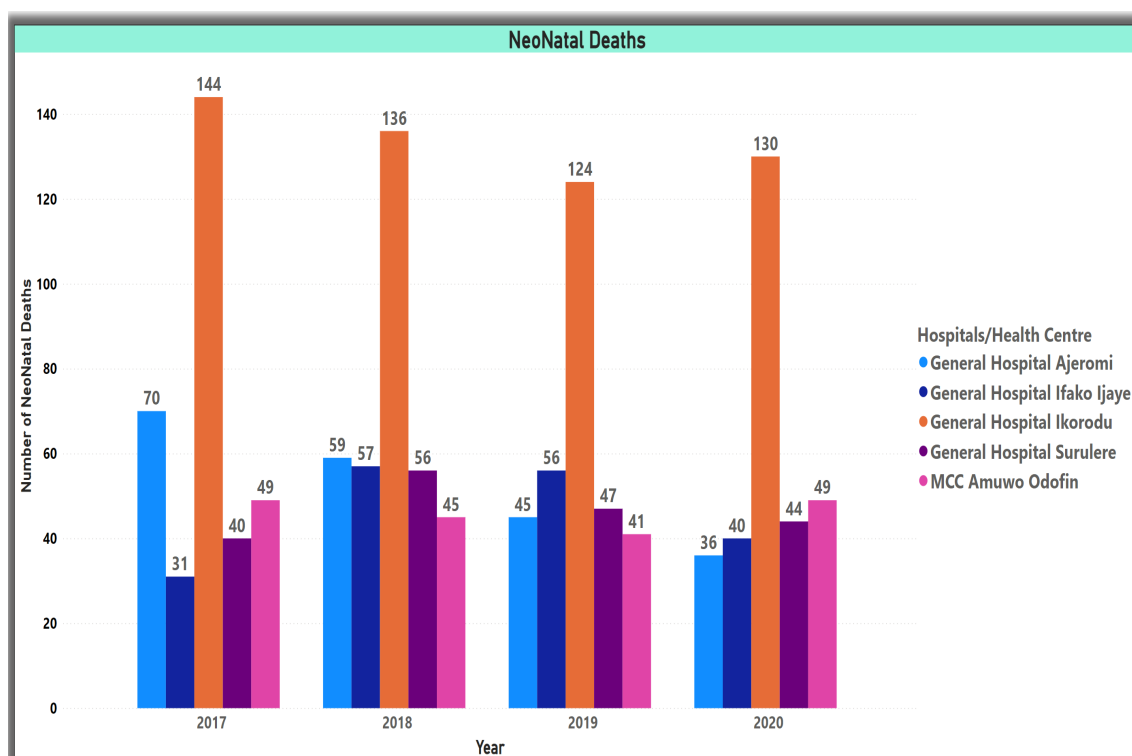
Table 3.5 gives a detailed statistics of Neonatal Deaths recorded across secondary health Facilities in the State.

**Table 3.6:** Statistics of Neonatal Deaths Recorded across Lagos State

S/N	Hospitals/Health Centre	2017	2018	2019	2020
1	Lagos Island Maternity Hospital	4	-	-	3
2	General Hospital Epe	15	34	36	24
3	General Hospital Badagry	1	20	18	14
4	General Hospital Gbagada	30	48	51	40
5	General Hospital Ikorodu	144	136	124	130
6	General Hospital Isolo	27	42	33	39
7	General Hospital Ajeromi	70	59	45	36
8	General Hospital Agbowo	1	-	-	-
9	General Hospital Orile Agege	1	11	21	12
10	General Hospital Surulere	40	56	47	44
11	General Hospital Apapa	1	1	3	4
12	General Hospital Mushin	-	-	-	-
13	General Hospital Somolu	2	2	-	-
14	General Hospital Ifako Ijaye	31	57	56	40
15	General Hospital Alimosho	50	32	20	53
16	General Hospital Ibeju Lekki	13	21	20	18
17	Onikan Health Centre	4	4	1	-
18	General Hospital Ijede	3	13	6	2
19	Ketu-Ejirin Health Centre	-	-	-	-
20	Harvey Road Health Centre	-	1	1	2
21	MCC Amuwo Odofin	49	45	41	49
<b>Total</b>		<b>486</b>	<b>582</b>	<b>523</b>	<b>510</b>

*Source: Lagos State Ministry of Health*





**Figure 3.9:** Analysis of Neonatal Deaths recorded across Five Secondary Health Facilities in Lagos State

Figure 3.6 analyses the first five hospitals with the highest record of Neonatal Deaths in Lagos State. The Figure also shows that General Hospital Ikorodu has over the years 2017-2020 constantly recorded the highest cases of neonatal deaths in Lagos state.

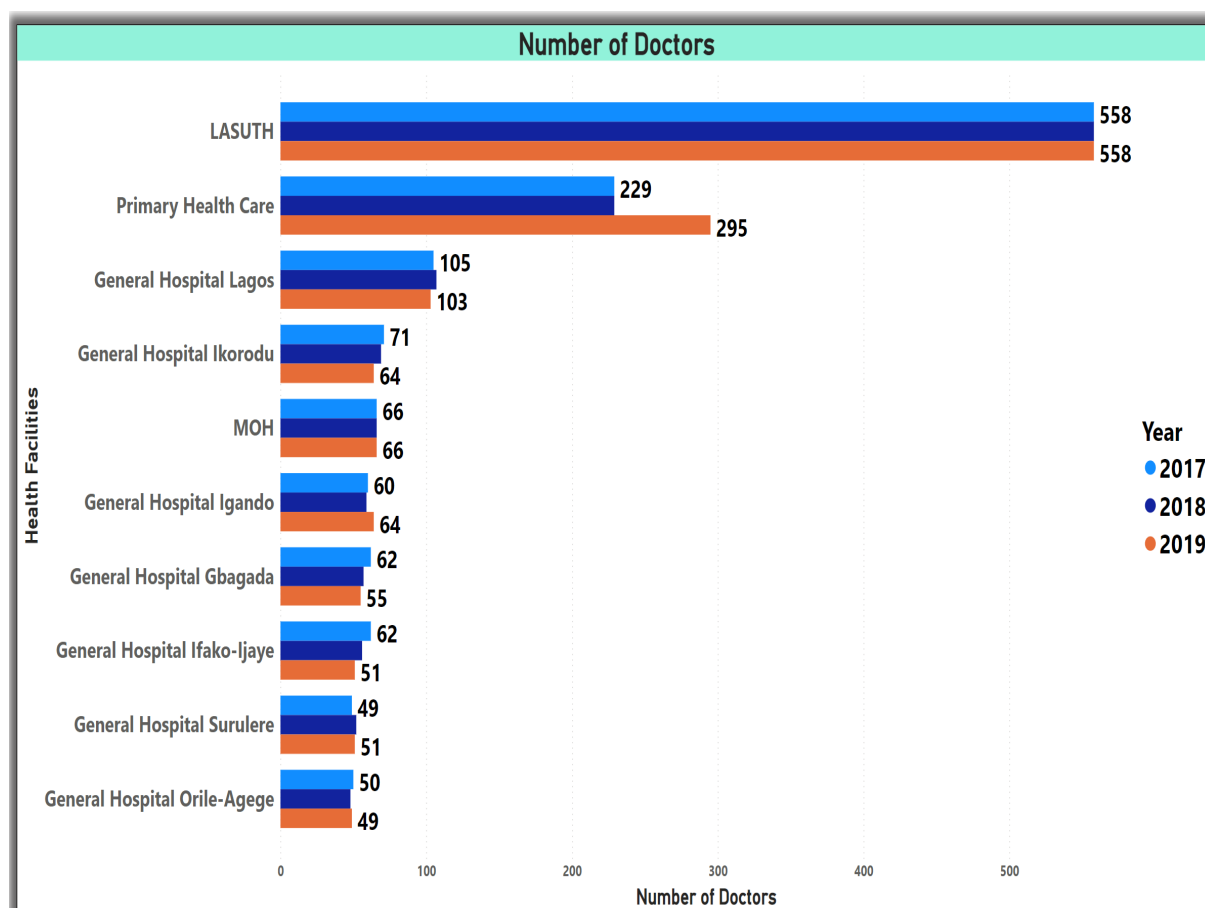
### 3.3 Workforce

Health services consist of medical professionals, organizations, and ancillary health care workers who provide medical care to those in need. The availability of these services is centered around making health care accessible, high quality, and patient-centered. Many different types of care and providers are necessary to offer successful health services. The table below shows the Number of Doctors recorded in each unit of Primary, Secondary, and Tertiary Health Facilities in the State.

**Table 3.7:** Statistics of Number of Doctors in Lagos State

S/N	Health Facilities	2017	2018	2019
1	Ministry of Health	66	66	66
2	Lagos State University Teaching Hospital	558	558	558
3	Health Service Commission	6	8	10
4	General Hospital Lagos	105	107	103
5	Massey Street Children's Hospital	22	22	24
6	Onikan Health Centre	17	22	21
7	Lagos Island Hospital	43	40	39
8	General Hospital Epe	22	26	28
9	General Hospital Badagry	23	28	26
10	General Hospital Ikorodu	71	69	64
11	General Hospital Isolo	38	45	45
12	General Hospital Ajeromi	44	39	38
13	General Hospital Agbowa	16	15	18
14	General Hospital Orile-Agege	50	48	49
15	General Hospital Surulere	49	52	51
16	General Hospital Mushin	27	26	24
17	General Hospital Somolu	27	25	21
18	General Hospital Ifako-Ijaye	62	56	51
19	General Hospital Igando	60	59	64
20	General Hospital Ibeju-Lekki	25	27	24
21	General Hospital Gbagada	62	57	55
22	General Hospital Apapa	23	19	19
23	Ebute-Metta Health Centre	22	16	13
24	Ijede Health Centre	21	24	23
25	Ketu-Ejinrin Health Centre	6	6	6
26	Harvey Road Health Centre	25	26	23
27	Mainland Hospital Yaba	18	15	10
28	ACC and Emergency Toll Gate	15	13	11
29	MCC Amuwo-Odofin	21	22	19
30	Primary Health Care	229	229	295
<b>Total</b>		<b>1773</b>	<b>1765</b>	<b>1798</b>

Source: Lagos State Ministry of Health



**Figure 3.10:** Analysis of Doctors across all the Health Facilities in Lagos

Figure 3.10 shows the Number of Doctors recorded in each unit of Primary, Secondary, and Tertiary Health Facilities in the State. It analysis the top 10 Health facilities with the highest number of doctors in the state. LASUTH has consistently recorded the highest number of doctors in 2017-2019.

### 3.4 In-Patients Attendance

Data on the number of patients on admission can assist the government in making adequate infrastructural and personnel provisions in the health facilities. Table 3.9 shows the statistics of In-Patients Admission across all the Secondary and Tertiary Health Facilities in Lagos State.

**Table 3.8:** Statistics on In-Patient Attendance

S/N	Hospitals/Health Centre	2017		2018		2019		2020	
		Male	Female	Male	Female	Male	Female	Male	Female
1	General Hospital Lagos	2166	1608	1763	1315	2806	1616	1359	919
2	LASUTH	N/A	N/A	N/A	N/A	8299	6978	5958	5939
3	General Hospital Epe	1025	1968	1105	2147	943	2056	567	1485
4	General Hospital Badagry	1130	2259	1052	2019	1025	2051	829	1900
5	General Hospital Gbagada	1442	3390	1474	3123	1364	3567	1066	3000
6	General Hospital Ikorodu	1050	974	1077	967	2338	5851	812	617
7	General Hospital Isolo	480	563	463	580	1618	4087	451	482
8	General Hospital Ajeromi	301	219	272	187	1018	1889	222	171
9	General Hospital Agbowa	661	930	677	918	703	925	554	691
10	General Hospital Orile-Agege	1516	3535	1658	3973	2171	4462	1521	3387
11	General Hospital Surulere	512	503	407	493	1432	3597	198	230
12	General Hospital Apapa	457	603	444	541	496	599	339	414
13	General Hospital Mushin	336	1166	296	1233	381	1214	186	923
14	General Hospital Somolu	232	1124	24	718	13	754	54	806
15	General Hospital Ifako Ijaye	346	314	357	276	1093	5006	176	177
16	General Hospital Alimosho	552	576	684	511	1683	5122	391	301
17	General Hospital Ibeju-Lekki	809	1851	872	2187	1019	2177	541	1283
18	Mainland Hospital Yaba	458	481	371	405	412	388	1125	681
19	Massey Street Children Hospital	2600	2612	2620	2689	2844	2603	1492	1260
20	Lagos Island Maternity Hospital	-	5688	-	5039	-	3705	-	3624
21	Onikan Health Centre	63	858	144	1194	329	1436	73	1010
22	Ebute-Metta Health Centre	400	500	416	495	486	603	251	387

*Continued on next page*

Table 3.8 – Continued from previous page

S/N	Hospitals/Health Centre	2017		2018		2019		2020	
		Male	Female	Male	Female	Male	Female	Male	Female
23	Ijede Health Centre	335	1340	284	1300	334	1364	214	1381
24	Ketu-Ejinrin Health Centre	111	164	101	129	84	157	67	127
25	Harvey Road Health Centre	46	898	86	1066	113	1072	83	987
<b>Total</b>		<b>17028</b>	<b>34124</b>	<b>16647</b>	<b>33505</b>	<b>33004</b>	<b>63279</b>	<b>18529</b>	<b>32182</b>

Source: Lagos State Ministry of Health

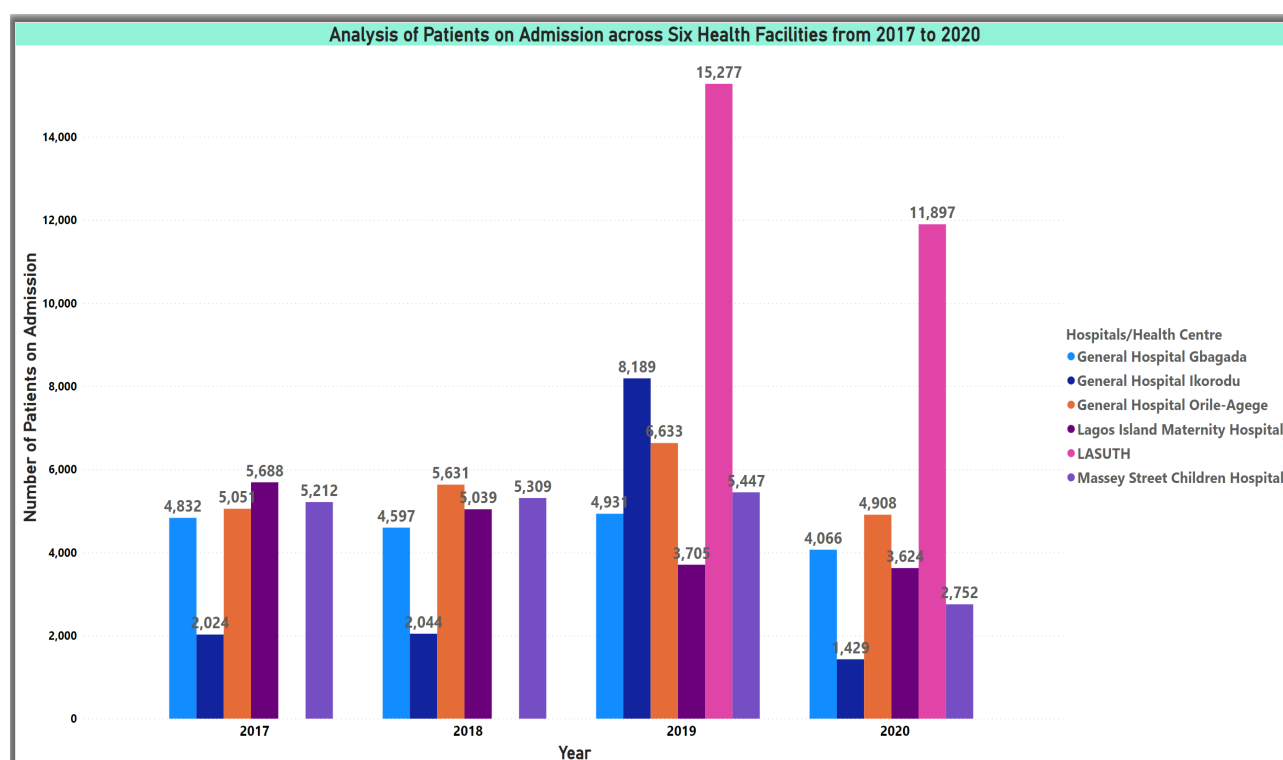


Figure 3.11: Analysis showing Patients on Admission

Figure 3.11 shows the top five facilities with the highest number of patients on admission. LASUTH recorded the highest number of Patients on Admission in 2019 and 2020 while there is a drastic decrease in patients on admission recorded at General Hospital Ikorodu from 2019 to 2020.

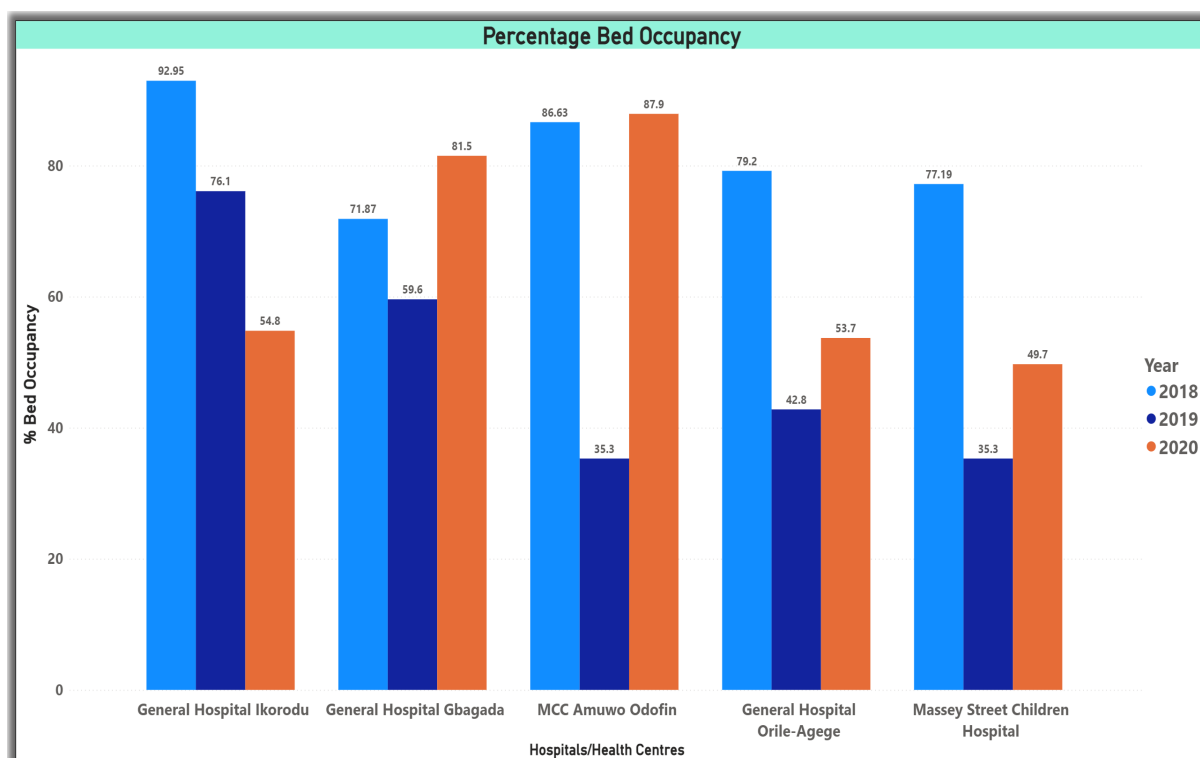
### 3.4.1 Percentage Bed Occupancy

The Percentage Bed Occupancy is calculated as the Average number of days when hospitals bed(Beds, Cradles, Cots, and Incubators) was occupied as % of available 365 days. Table 3.9 detailed the statistics of % Bed Occupancy across all the Secondary and Tertiary health facilities in Lagos State.

**Table 3.9:** Percentage Bed Occupancy

S/N	Hospitals/Health Centres	2018	2019	2020
1	General Hospital Lagos	51.4	52.5	37.7
2	LASUTH	-	-	73.1
3	General Hospital Epe	5.09	12.2	19.6
4	General Hospital Badagry	40.17	19.5	45.2
5	General Hospital Gbagada	71.87	59.6	81.5
6	General Hospital Ikorodu	92.95	76.1	54.8
7	General Hospital Isolo	42.07	45.5	41.8
8	General Hospital Ajeromi	51.02	20	39.7
9	General Hospital Agbowa	53.05	6.7	40.2
10	General Hospital Orile-Agege	79.2	42.8	53.7
11	General Hospital Surulere	45.37	37.4	20.5
12	General Hospital Apapa	26.44	7.6	19.1
13	General Hospital Mushin	60.14	10.7	46.1
14	General Hospital Shomolu	51.75	3.4	35.4
15	General Hospital Ifako-Ijaiye	66.24	37.7	50.6
16	General Hospital Alimoso	60.94	44.2	31.8
17	General Hospital Ibeju-Lekki	49.14	15.7	53.2
18	Mainland Hospital Yaba	31.43	13.7	16.6
19	Massey Street Children Hospital	77.19	35.3	49.7
20	Lagos Island Maternity Hospital	34.04	28.8	28.6
21	Onikan Health Centre	40.45	10.3	33.1
22	Ebute-Metta Health Centre	51.13	7.8	27.8
23	Ijede Health Centre	56.55	10.2	69.7
24	Ketu-Ejinrin Health Centre	8.56	0.5	11
25	Harvey Road Health Centre	42.45	7.7	51.1
26	MCC Amuwo Odofin	86.63	35.3	87.9

Source: Lagos State Ministry of Health



**Figure 3.12:** Percentage of Bed Occupancy

Figure 3.12 analyses the % Bed Occupancy of 5 Secondary health facilities with the highest records. General Hospital Ikorodu has a 38.15% decrease in % Bed Occupancy from 2018 to 2020 while General Hospital records a 10% increase from 2018 to 2020.

## 3.5 Environment

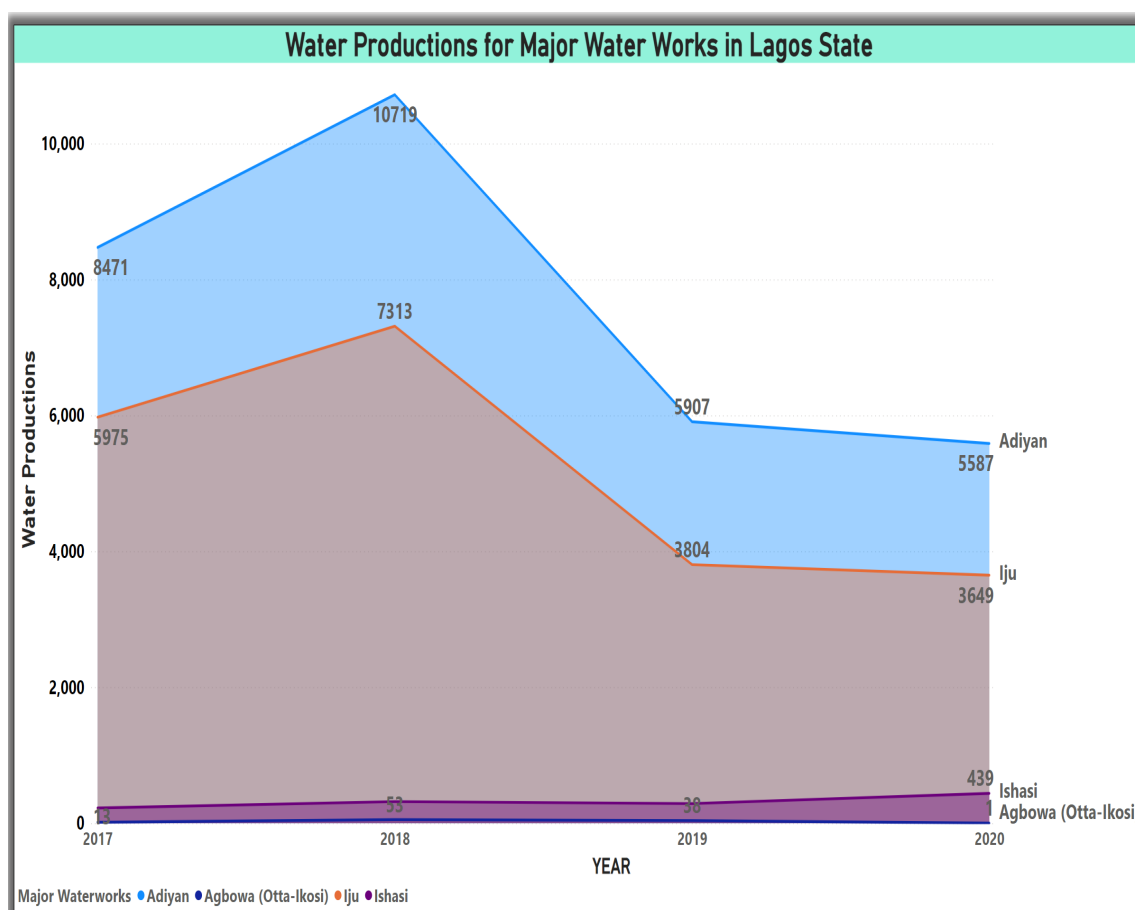
### 3.5.1 Statistics on Water Production

Lagos Water Supply System comprises 4 Major Waterworks which are Adiyen, Iju, Ishasi, and Agbowa(Otta-Ikosi). Table 3.10 is the Statistics of Water Production on Major Waterworks from 2017 to 2020.

**Table 3.10:** Analysis of Water Production on Major Waterworks (MG-Million) Gallon

S/N	Major Waterworks	2017	2018	2019	2020
1	Adiyan	8471.01	10717.35	5907.67	5586.78
2	Iju	5975.13	7312.67	3803.37	3649.21
3	Ishasi	223.84	317.27	287.22	438
4	Agbowa(Otta-Ikosi)	13.06	52.18	36.39	1.08
<b>Total</b>		<b>14683.04</b>	<b>18399.47</b>	<b>10034.65</b>	<b>9675.07</b>

Source: Lagos State Ministry of Water Corporations



**Figure 3.13:** Analysis on Major Water Works

Figure 3.10 shows the trend of Water Production across the 4 Major Waterworks in Lagos State. Adiyan Water Works has the highest Water Production in State from 2017 to 2020.



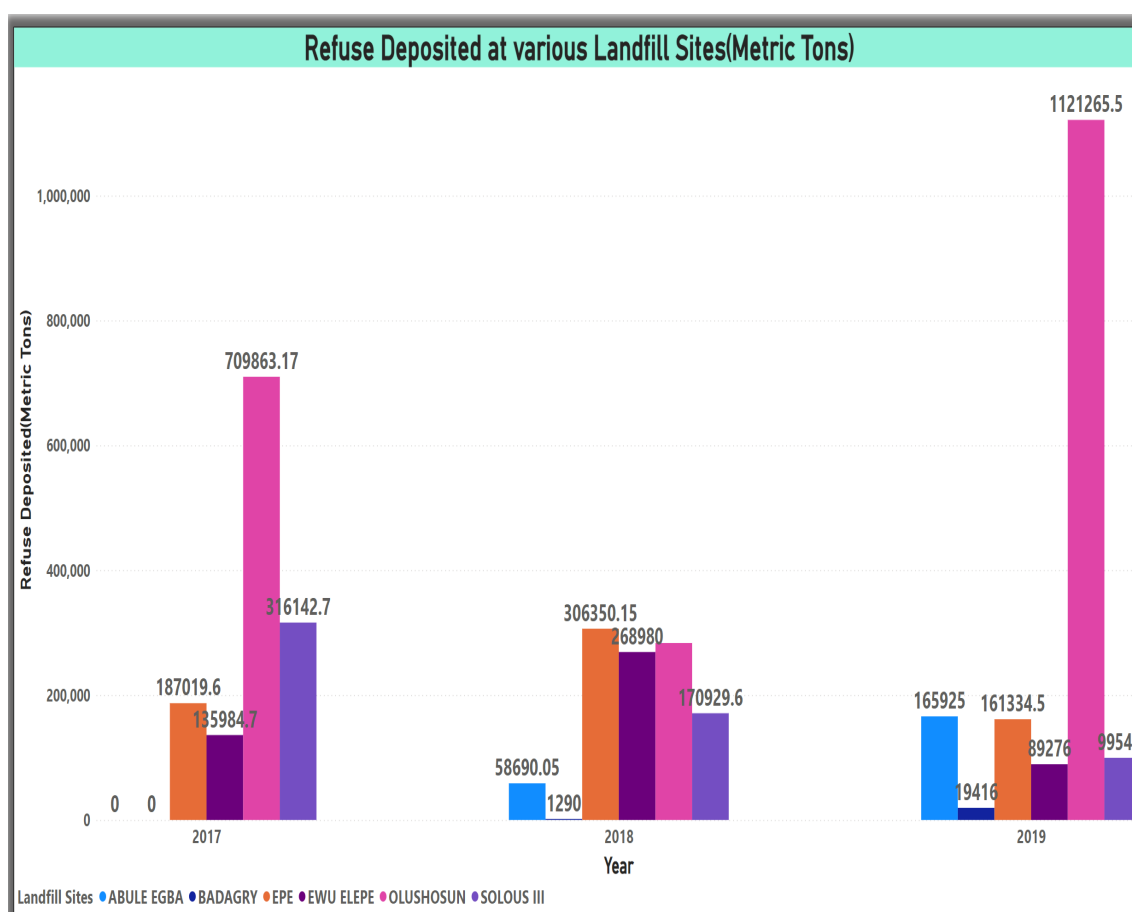
### 3.5.2 Statistics of Refuse Deposited at Various Landfill Sites

There are 6 major Landfill which are Olushosun, Solous III, Ewu Elepe, Epe, Abule Egba, and Badagry. Table 3.11 is the Statistics of Refuse Deposited at the Varios Landfill Sites from 2017 to 2020.

**Table 3.11:** Statistics Refuse Deposited at Various Landfill Sites

S/N	LANDFILL SITES	2017	2018	2019
1	OLUSHOSUN	709863.17	283411.51	1121265.5
2	SOLOUS III	316142.7	170929.6	99540
3	EWU ELEPE	135984.7	268980	89276
4	EPE	187019.6	306350.15	161334.5
5	ABULE EGBA	-	58690.05	165925
6	BADAGRY	-	1290	19416
<b>Total</b>		<b>1349010.17</b>	<b>1089651.31</b>	<b>1656757</b>

Source: Lagos State Waste Management Agency



**Figure 3.14:** Analysis of Refuse Deposited at Various Landfill Sites

Figure 3.11 analysis Refuses deposited across the six Landfill sites(Metric Tons) in Lagos State from 2017 to 2019. Olushosun has the highest refuse deposited.

## Chapter 4: Education and Technology

### 4.1 Access to Education

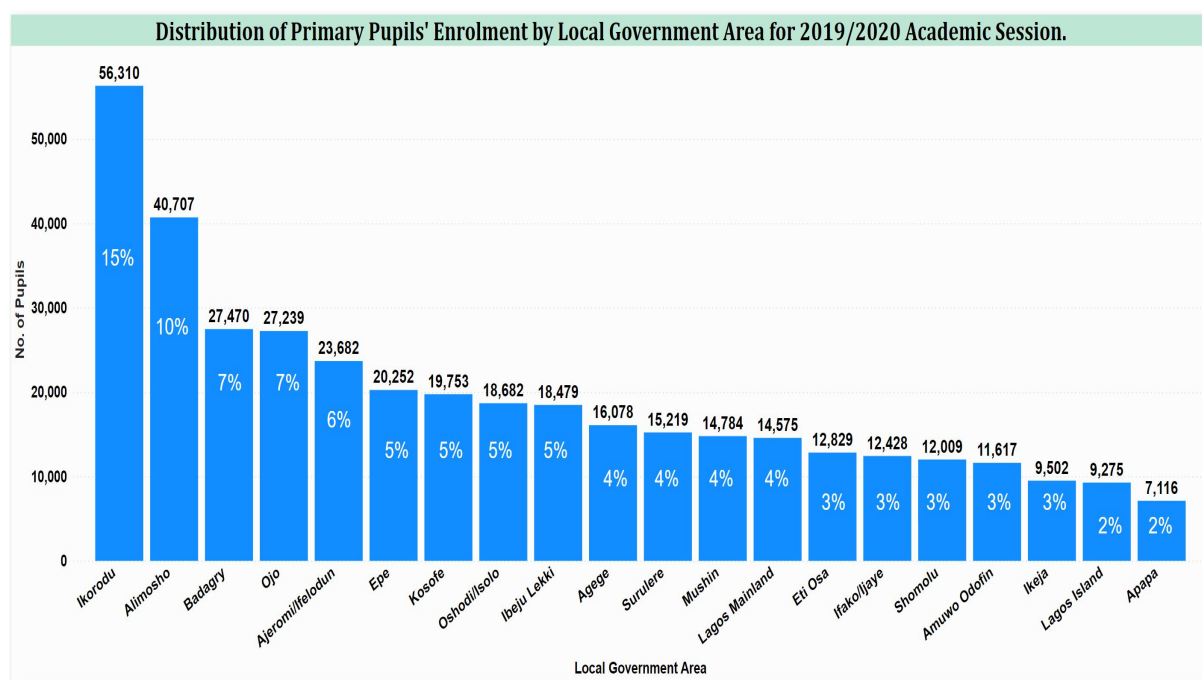
#### 4.1.1 Primary School Statistics

This is the record of enrolment in Lagos State Public Primary Schools. There is a total of 1,016 public primary schools in Lagos State. Table 4.1 records the enrolment statistics of primary pupils by gender and across the 20 Local Government Areas in Lagos State.

**Table 4.1:** Enrolment in Public Primary School by LGA from year 2016/2017 to 2019/2020

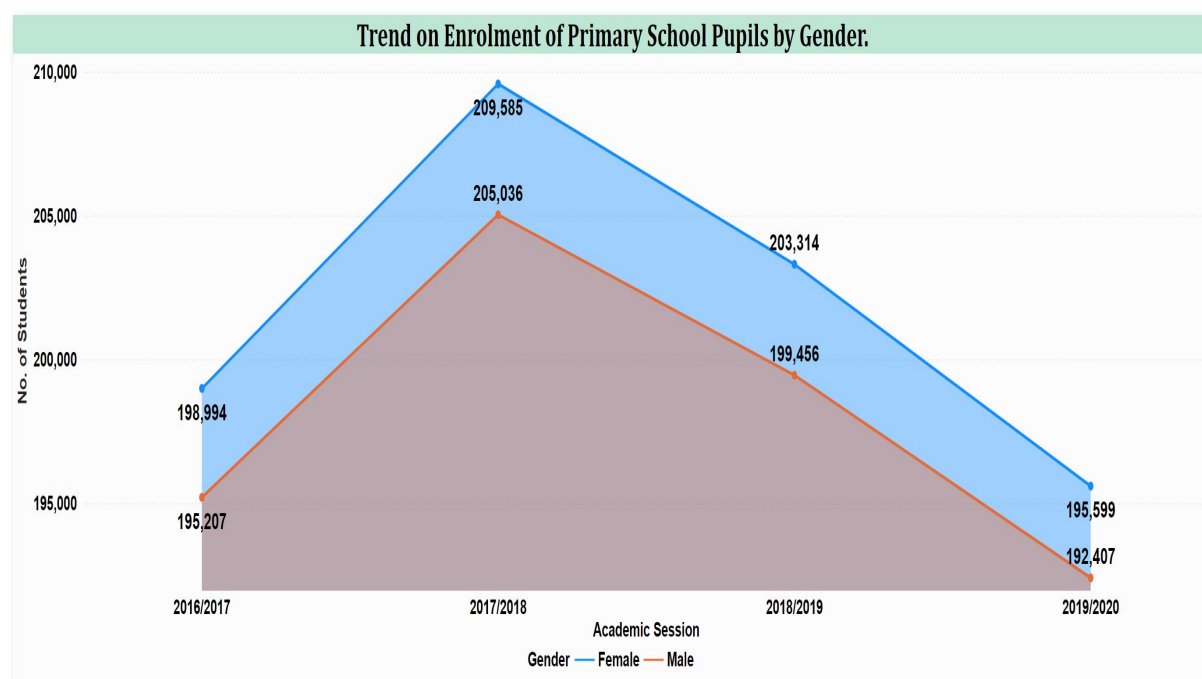
S/N	Local Govt. Area	2016/2017		2017/2018		2018/2019		2019/2020	
		Male	Female	Male	Female	Male	Female	Male	Female
1	Agege	9477	9386	8569	8880	8258	8703	8000	8078
2	Ajeromi/Ifelodun	11776	11884	12297	12648	12336	12530	11535	12147
3	Alimosho	22666	22012	22550	21807	21235	20627	20775	19932
4	Amuwo Odofin	5825	6510	5979	6788	5801	6516	5491	6126
5	Apapa	4257	4272	4157	4012	4121	4208	3514	3602
6	Badagry	14195	13541	15276	14644	14276	13553	14074	13396
7	Epe	10662	10188	10878	10526	11026	10738	10160	10092
8	Eti Osa	6294	6937	6114	6577	5985	6474	6197	6632
9	Ibeju Lekki	8562	8721	8402	8478	8879	9008	9084	9395
10	Ifako/Ijaye	7715	7873	7305	7385	6585	6501	6321	6107
11	Ikeja	5028	4994	5237	5527	4981	5151	4703	4799
12	Ikorodu	22368	21995	29010	29392	28786	29007	27770	28540
13	Kosofe	10220	11224	10072	10771	9958	10528	9667	10086
14	Lagos Island	4469	5154	4502	5173	4323	4864	4435	4840
15	Lagos Mainland	7385	8289	7705	8239	7569	7659	7132	7443
16	Mushin	8936	9424	8701	9162	8183	8807	7243	7541
17	Ojo	13577	13408	14448	13924	14465	14169	13959	13280
18	Oshodi/Isolo	8916	9425	9454	9993	8821	9494	9088	9594
19	Shomolu	6549	6705	6190	6554	6176	6425	5920	6089
20	Surulere	6330	7052	8190	9105	7692	8352	7339	7880
<b>Sub Total</b>		<b>195,207</b>	<b>198,994</b>	<b>205,036</b>	<b>209,585</b>	<b>199,456</b>	<b>203,314</b>	<b>192,407</b>	<b>195,599</b>
<b>Grand Total</b>		<b>394,201</b>		<b>414,621</b>		<b>402,770</b>		<b>388,006</b>	

Source: Lagos State Ministry of Education



**Figure 4.1:** Distribution of Primary School pupils 2019/2020 Academic session

Figure 4.1 shows the distribution of pupils' enrolment in primary schools in 2019/2020 academic session with Ikorodu having the highest enrolment of 15% and Apapa with the lowest enrolment of 2%.



**Figure 4.2:** Enrolment trend of primary pupils from 2016/2017 to 2019/2020 academic sessions

Figure 4.2 shows the enrolment trend of primary pupils for four academic sessions. From the trend, there is a 2% decrease in enrolment from 2016/2017 to 2019/2020 academic sessions with a deeper decrease of 4% between 2018/2019 to 2019/2020.

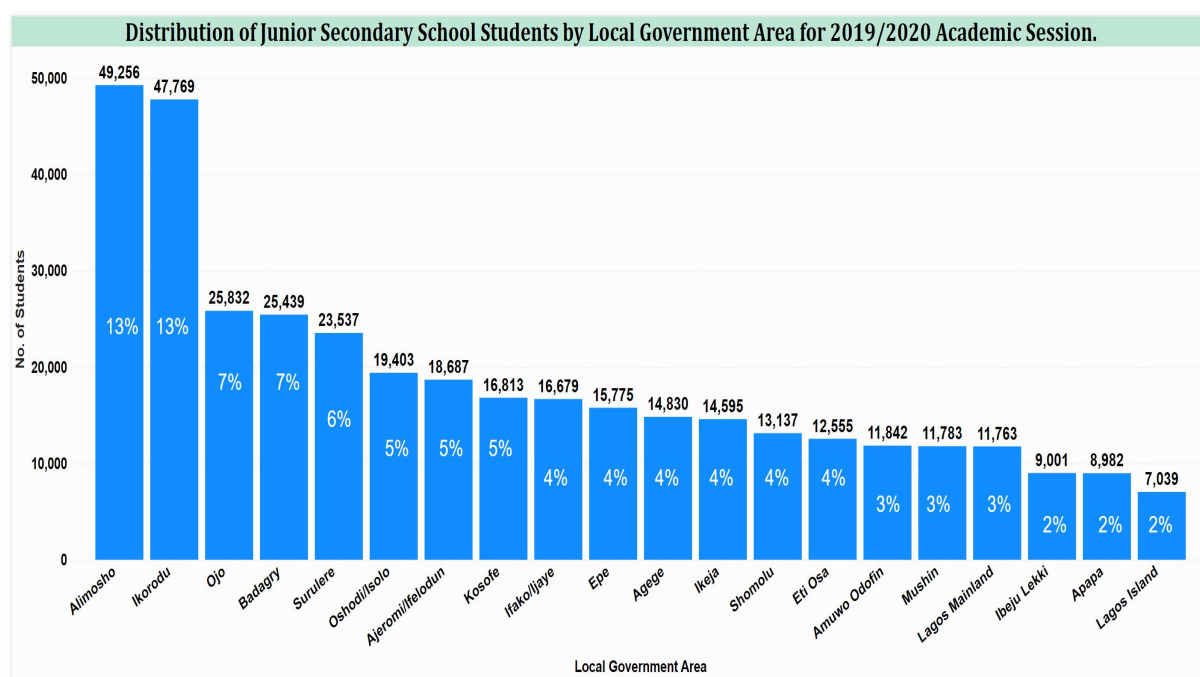
### 4.1.2 Junior Secondary School Statistics

This is the record of enrolment in Lagos State Public Junior Secondary Schools. There is a total of 353 public junior secondary schools in Lagos State. Table 4.2 records the enrolment statistics of junior secondary students by gender and across the 20 Local Government Areas in Lagos State.

**Table 4.2:** Enrolment in Junior Secondary School by gender in each LGA from year 2016/2017 to 2019/2020

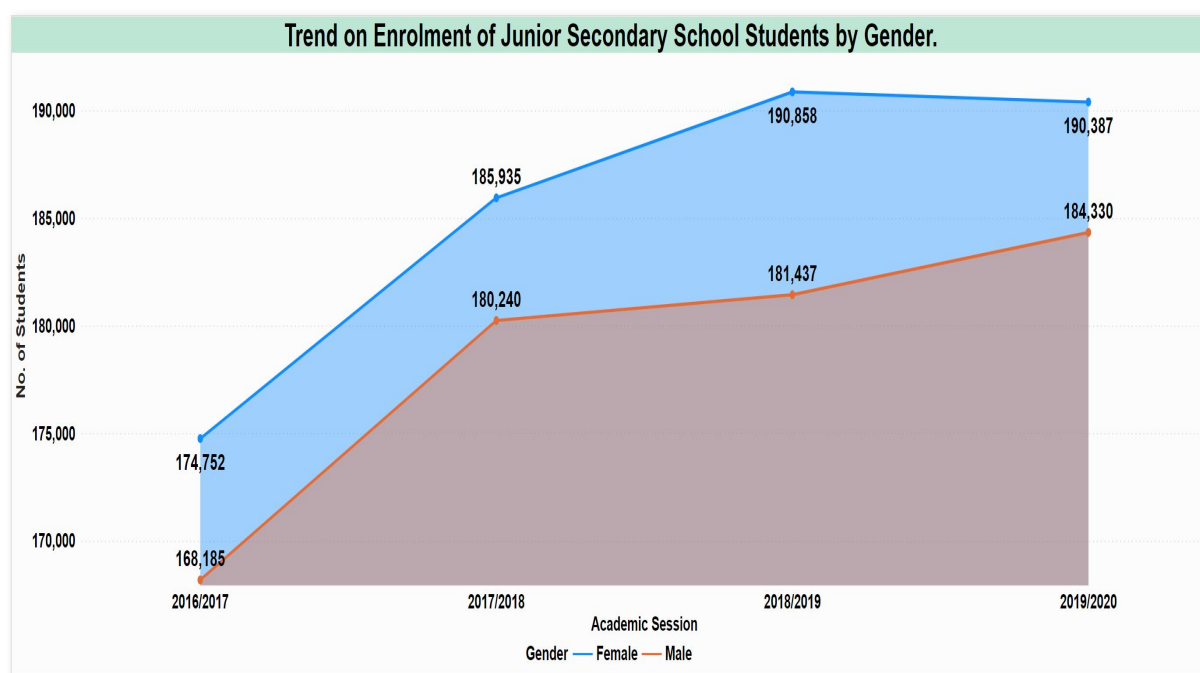
S/N	Local Govt. Area	2016/2017		2017/2018		2018/2019		2019/2020	
		Male	Female	Male	Female	Male	Female	Male	Female
1	Agege	6988	8005	7087	8109	6735	7833	6827	8003
2	Ajeromi/Ifelodun	8838	8851	9201	9304	8528	9398	9328	9359
3	Alimosho	22559	22175	24300	24177	24749	24517	24760	24496
4	Amuwo Odofin	4743	5734	5087	6052	5080	6154	5518	6324
5	Apapa	4032	3888	4610	4341	4748	4922	4567	4415
6	Badagry	11116	10371	11822	11177	12475	12065	13084	12355
7	Epe	7252	7023	7952	7400	8006	7992	8140	7635
8	Eti Osa	6078	6796	5953	6909	6166	7042	5756	6799
9	Ibeju Lekki	3537	3593	4003	4189	4242	4616	4215	4786
10	Ifako/Ijaye	6289	6183	7468	7066	7850	7612	8607	8072
11	Ikeja	6314	6519	6723	6937	6855	7165	7227	7368
12	Ikorodu	19330	19285	22005	21723	22821	22882	23997	23772
13	Kosofe	7110	7564	8647	9222	8337	8972	8172	8641
14	Lagos Island	3518	3148	3452	3313	3529	3302	3522	3517
15	Lagos Mainland	5243	5607	5662	5994	5516	5952	6004	5759
16	Mushin	7579	6163	7609	6158	7253	5908	6390	5393
17	Ojo	10800	11237	11962	12151	12255	12659	12893	12939
18	Oshodi/Isolo	9394	10394	9607	10531	9496	10339	9160	10243
19	Shomolu	6312	8214	6164	7542	6080	7582	5865	7272
20	Surulere	11153	14002	10926	13640	10716	13946	10298	13239
<b>Sub Total</b>		<b>168,185</b>	<b>174,752</b>	<b>180,240</b>	<b>185,935</b>	<b>181,437</b>	<b>190,858</b>	<b>184,330</b>	<b>190,387</b>
<b>Grand Total</b>		<b>342,937</b>		<b>366,175</b>		<b>372,295</b>		<b>374,717</b>	

Source: Lagos State Ministry of Education



**Figure 4.3:** Distribution of Junior Secondary School students 2019/2020 Academic session

Figure 4.3 shows the distribution of students enrolment in junior secondary schools in 2019/2020 academic session with Alimosho having the highest enrolment of 13% and Apapa with the lowest enrolment of 2%.



**Figure 4.4:** Enrolment trend of Junior Secondary students from 2016/2017 to 2019/2020 academic sessions

Figure 4.4 shows the enrolment trend of junior secondary students for four academic sessions. From the trend, there is a 9% increase in enrolment from 2016/2017 to 2019/2020 academic sessions with Ifako/Ijaye LGA having the highest increase of 34% and Mushin LGA with the most decline of 14%.

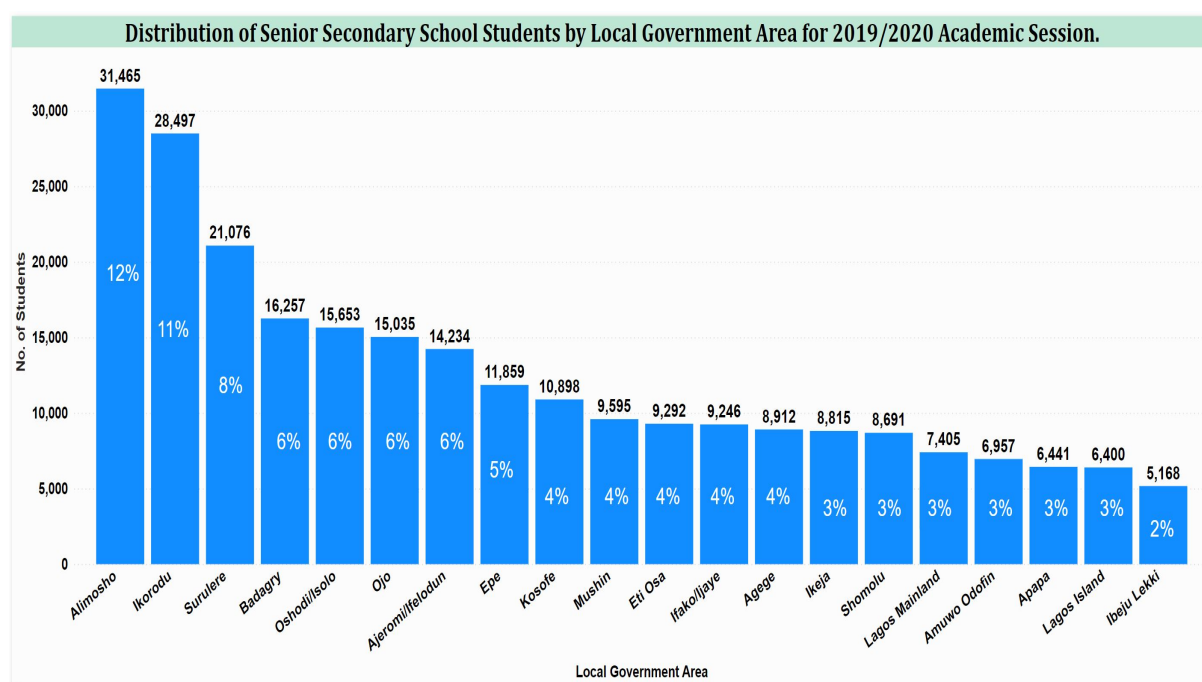
### 4.1.3 Senior Secondary School Statistics

This is the record of enrolment in Lagos State Public Senior Secondary Schools. There is a total of 323 public senior secondary schools in Lagos State. Table 4.3 records the enrolment statistics of senior secondary students by gender and across the 20 Local Government Areas in Lagos State.

**Table 4.3:** Enrolment in Senior Secondary School by gender in each LGA from year 2016/2017 to 2019/2020

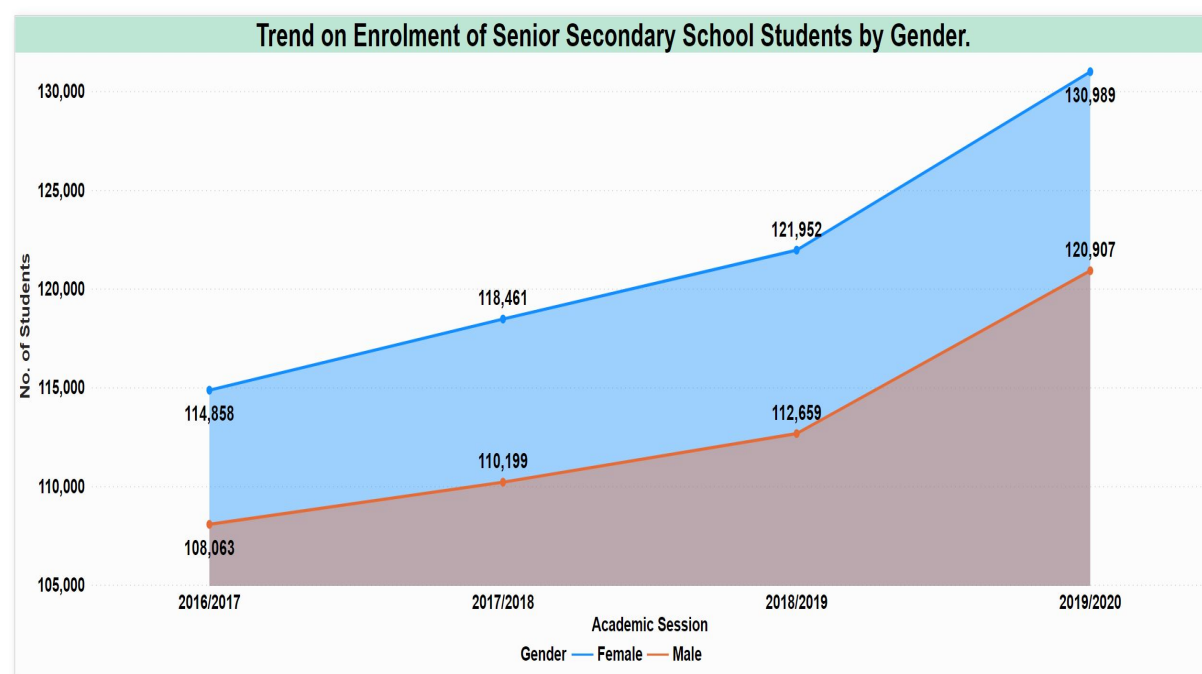
S/N	Local Govt. Area	Academic Sessions							
		2016/2017		2017/2018		2018/2019		2019/2020	
		Male	Female	Male	Female	Male	Female	Male	Female
1	Agege	3846	4797	4376	5352	4044	5016	3987	4,925
2	Ajeromi/Ifelodun	7655	7788	7117	7408	6796	7353	6997	7,237
3	Alimosho	13300	13285	13504	14088	13906	14293	15394	16,071
4	Amuwo Odofin	3178	3707	2954	3295	2915	3578	3069	3,888
5	Apapa	2805	2908	2876	2876	2883	2892	3012	3,429
6	Badagry	7055	7032	7449	7198	7749	7626	8290	7,967
7	Epe	5338	5389	5384	5586	5839	5913	5673	6,186
8	Eti Osa	4451	4922	4629	5627	4210	4923	4150	5,142
9	Ibeju Lekki	1849	1911	2238	2246	2332	2401	2500	2,668
10	Ifako/Ijaye	3298	3179	3784	3564	4169	4191	4649	4,597
11	Ikeja	4327	4504	4511	4586	4216	4167	4384	4,431
12	Ikorodu	10498	11335	10330	11181	11564	12574	14186	14,311
13	Kosofe	4135	5132	4684	5188	4909	5496	5177	5,721
14	Lagos Island	3147	2725	2947	2735	3113	2788	3279	3,121
15	Lagos Mainland	3253	3126	3143	3269	3289	3479	3985	3,420
16	Mushin	5712	4673	5593	4674	5087	4590	4619	4,976
17	Ojo	6442	6789	6581	6737	7007	6954	7456	7,579
18	Oshodi/Isolo	6010	6940	6098	7177	6252	7502	7237	8,416
19	Shomolu	3091	3631	3471	4497	3744	4661	3956	4,735
20	Surulere	8673	11085	8530	11177	8635	11555	8907	12,169
<b>Sub Total</b>		<b>108063</b>	<b>114858</b>	<b>110199</b>	<b>118461</b>	<b>112659</b>	<b>121952</b>	<b>120907</b>	<b>130989</b>
<b>Grand Total</b>		<b>222921</b>		<b>228660</b>		<b>234611</b>		<b>251896</b>	

Source: Lagos State Ministry of Education



**Figure 4.5:** Distribution of Senior Secondary School students 2019/2020 Academic session

Figure 4.5 shows the distribution of student's enrolment in senior secondary schools in 2019/2020 academic session with Alimosho having the highest enrolment of 12% and Ibeju Lekki with the lowest enrolment of 2%.



**Figure 4.6:** Enrolment trend of Senior Secondary students from 2016/2017 to 2019/2020 academic sessions

Figure 4.6 shows the enrolment trend of senior secondary students for four academic sessions. From the trend, there is a 13% increase in enrolment from 2016/2017 to 2019/2020 academic sessions with Ifako/Ijaye LGA having the highest increase of 43% and Mushin LGA with the most decline of 8

## 4.2 Special needs children

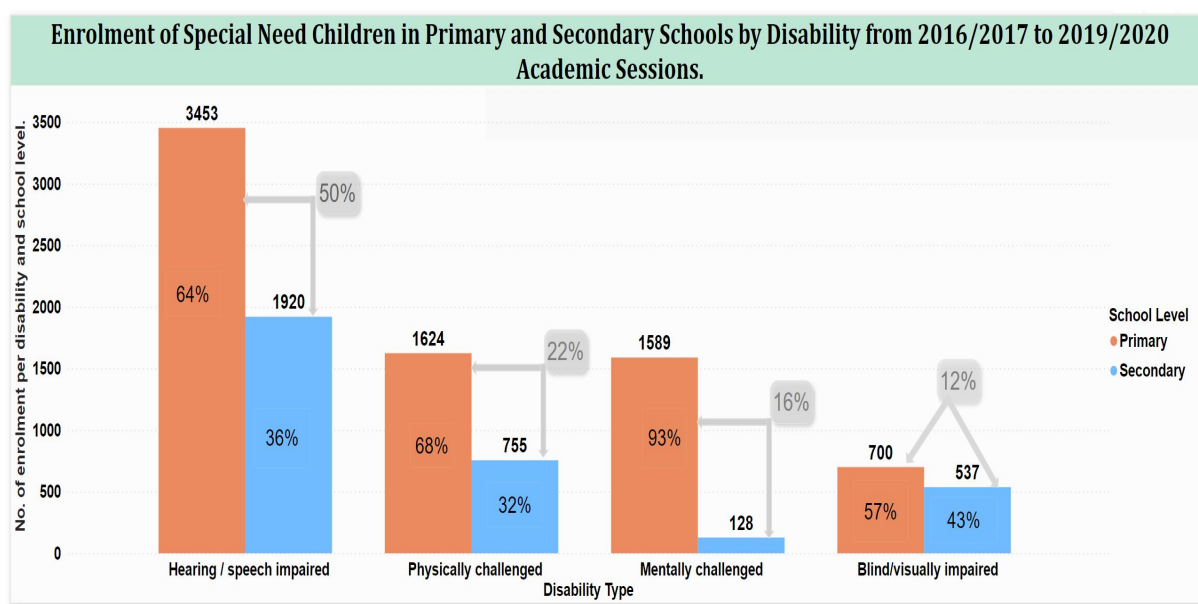
This records the enrolment of Special needs students in public primary and secondary schools. There is a total of 50 public special needs schools in Lagos State, which consists of 5 non-inclusive special needs schools and 45 inclusive (31 primary and 14 secondary) schools. Table 4.4 records the enrolment statistics of special needs children in public primary and secondary school by their disability.

**Table 4.4:** Enrolment of Special needs students in public primary and secondary school by disability from 2016/2017 to 2019/2020 academic sessions

Types of Disability	Academic Sessions							
	2016/2017		2017/2018		2018/2019		2019/2020	
	Primary	Secondary	Primary	Secondary	Primary	Secondary	Primary	Secondary
Blind/visually impaired	159	226	250	101	139	159	152	51
Physically challenged	276	246	276	220	510	155	562	134
Hearing/Speech impaired	884	584	820	554	851	418	938	364
Mentally challenged	557	34	424	55	289	23	319	16
<b>Sub Total</b>	<b>1,876</b>	<b>1,090</b>	<b>1,770</b>	<b>930</b>	<b>1,789</b>	<b>755</b>	<b>1,971</b>	<b>565</b>
<b>Grand Total</b>	<b>2,966</b>		<b>2,700</b>		<b>2,544</b>		<b>2,536</b>	

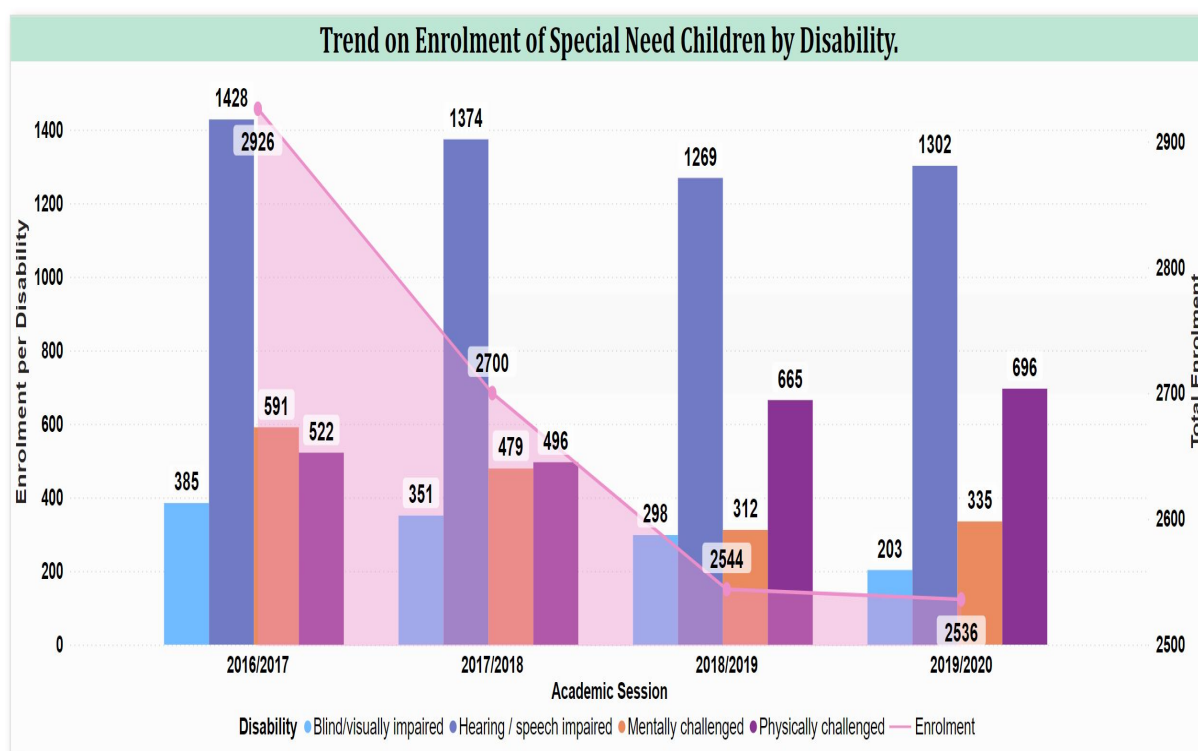
Source: Lagos State Ministry of Education





**Figure 4.7:** Enrolment and Composition of special needs children in primary and secondary schools.

Figure 4.7 shows the composition of special needs students in public primary and secondary school. Hearing/Speech impaired students made up 50% percent of the enrolment while Blind/Visually impaired has the lowest enrolment of 12%. From the chart, we can also deduce that enrolment is very low in secondary schools.



**Figure 4.8:** Distribution and enrolment trend of Special needs students by disability

Figure 4.8 shows the distribution and enrolment trend of special needs students for four academic sessions. From the trend, there is a 13% decrease in enrolment from 2016/2017 to 2019/2020 academic sessions with Blind/Visually impaired having the highest decrease of 47%.

## 4.3 Students-teacher ratio

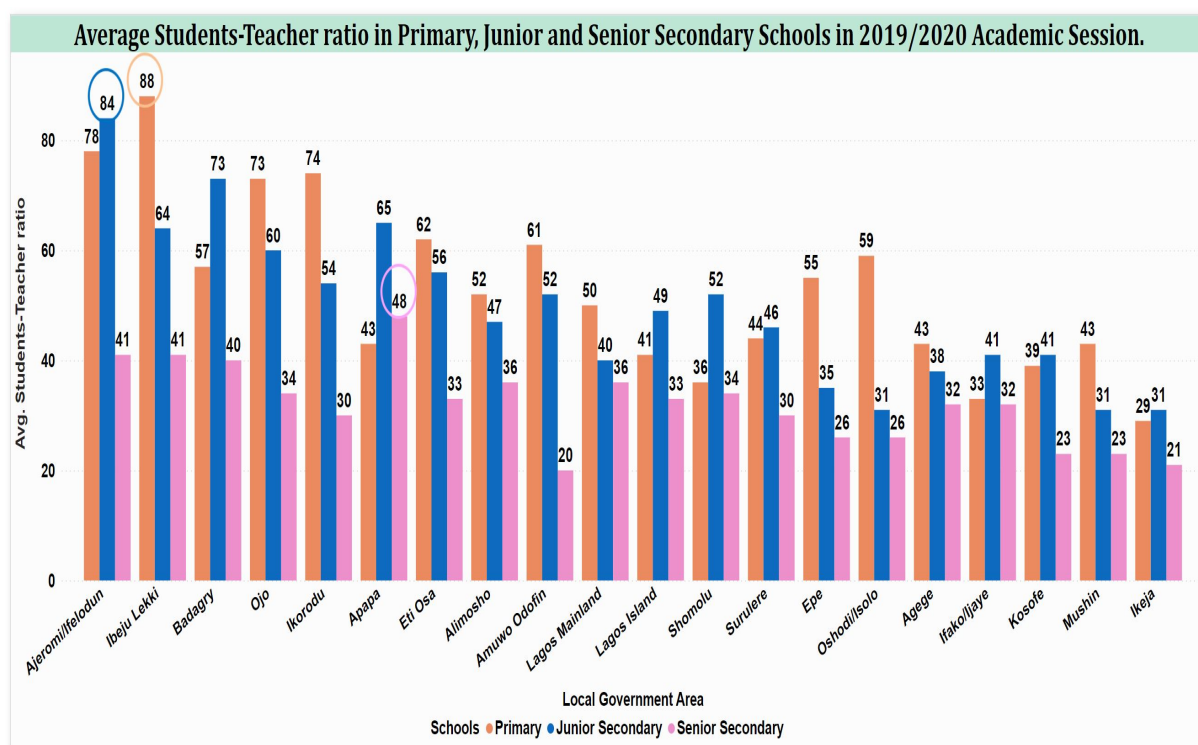
### 4.3.1 Primary, Junior and Senior Secondary School

The Students-Teacher ratio is a measure of the number of students per teacher in a classroom. According to UNESCO and National Policy on Education, the standard for Pupil-teacher ratio in primary schools is 1:35 and 1:40 for secondary schools. Table 4.5 records the average students-teacher ratio in primary, junior and, senior secondary schools across the 20 Local Government Areas in Lagos State.

**Table 4.5:** Students- Primary, Junior, and Senior Secondary School in each LGA from year 2016/2017 to 2019/2020

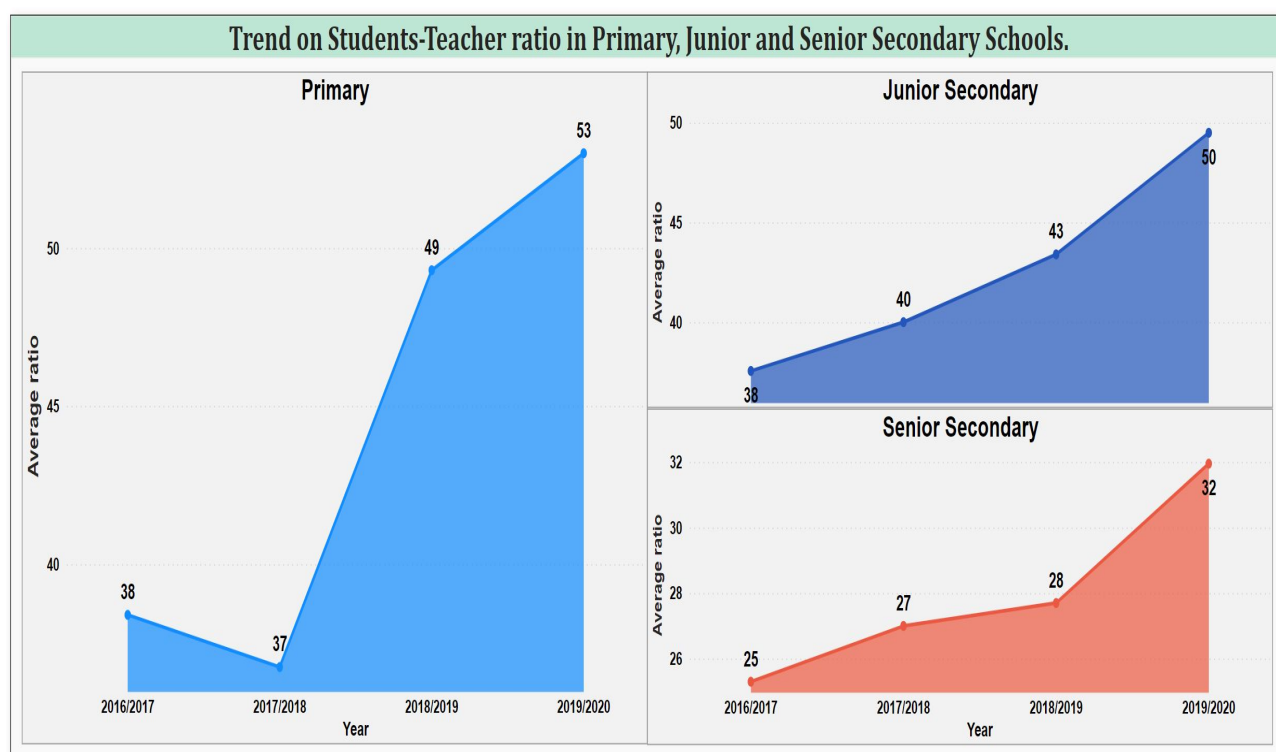
S/N	LGA	Academic Sessions											
		2016/2017			2017/2018			2018/2019			2019/2020		
		Primary	JSS	SSS	Primary	JSS		Primary	JSS	SSS	Primary	JSS	SSS
1	Agege	28	32	27	28	34	32	38	39	32	43	38	32
2	Ajeromi/Ifelodun	56	50	42	56	61	41	70	65	38	78	84	41
3	Alimosho	32	32	28	31	42	29	52	44	31	52	47	36
4	Amuwo Odofin	44	30	20	46	36	19	61	41	17	61	52	20
5	Apapa	34	49	34	34	59	38	40	72	42	43	65	48
6	Badagry	51	47	33	49	55	34	61	60	33	57	73	40
7	Epe	50	36	25	42	34	24	56	34	26	55	35	26
8	Eti Osa	50	45	28	46	43	33	58	44	29	62	56	33
9	Ibeju Lekki	53	61	30	47	55	36	79	52	34	88	64	41
10	Ifako/Ijaye	27	35	18	23	31	21	30	28	25	33	41	32
11	Ikeja	20	23	17	21	26	19	26	26	18	29	31	21
12	Ikorodu	45	42	26	46	40	21	67	49	24	74	54	30
13	Kosofe	29	29	17	26	32	20	34	39	22	39	41	23
14	Lagos Island	30	36	26	31	33	27	36	34	28	41	49	33
15	Lagos Mainland	41	31	22	33	36	25	45	41	28	50	40	36
16	Mushin	31	29	22	34	30	22	44	28	21	43	31	23
17	Ojo	51	34	26	49	50	27	69	47	25	73	60	34
18	Oshodi /Isolo	34	26	18	33	26	19	46	25	20	59	31	26
19	Shomolu	25	47	21	25	40	26	30	60	31	36	52	34
20	Surulere	37	37	26	35	37	27	44	40	30	44	46	30
<b>Grand Average</b>		<b>38</b>	<b>38</b>	<b>25</b>	<b>37</b>	<b>40</b>	<b>27</b>	<b>49</b>	<b>43</b>	<b>28</b>	<b>53</b>	<b>50</b>	<b>32</b>

Source: Lagos State Ministry of Education



**Figure 4.9:** Distribution of Students-Teacher ratio in Primary, Junior, and Senior Secondary Schools per LGA in 2019/2020 academic session

Figure 4.9 shows the average distribution of students-teacher ratio in primary, junior and, senior secondary school. From the visual Ibeju Lekki has the highest average ratio of 88 pupils per teacher in primary school, Ajeromi/Ifelodun has the highest ratio of 84 students per teacher for junior secondary schools and Apapa has the highest ratio of 48 students per teacher for senior secondary schools.



**Figure 4.10:** Trend of Students-Teacher ratio in Primary, Junior and Senior Secondary schools from 2016/2017 to 2019/2020 academic sessions.

Figure 4.10 shows that there is an increase in students-teachers ratio from 2016/2017 to 2019/2020 academic sessions. This increase is very paramount between 2018/2019 and 2019/2020 academic sessions which recorded an increase of 8%, 16% and 14% in primary, junior and, senior secondary schools respectively.

## 4.4 Teachers Statistics and Performance

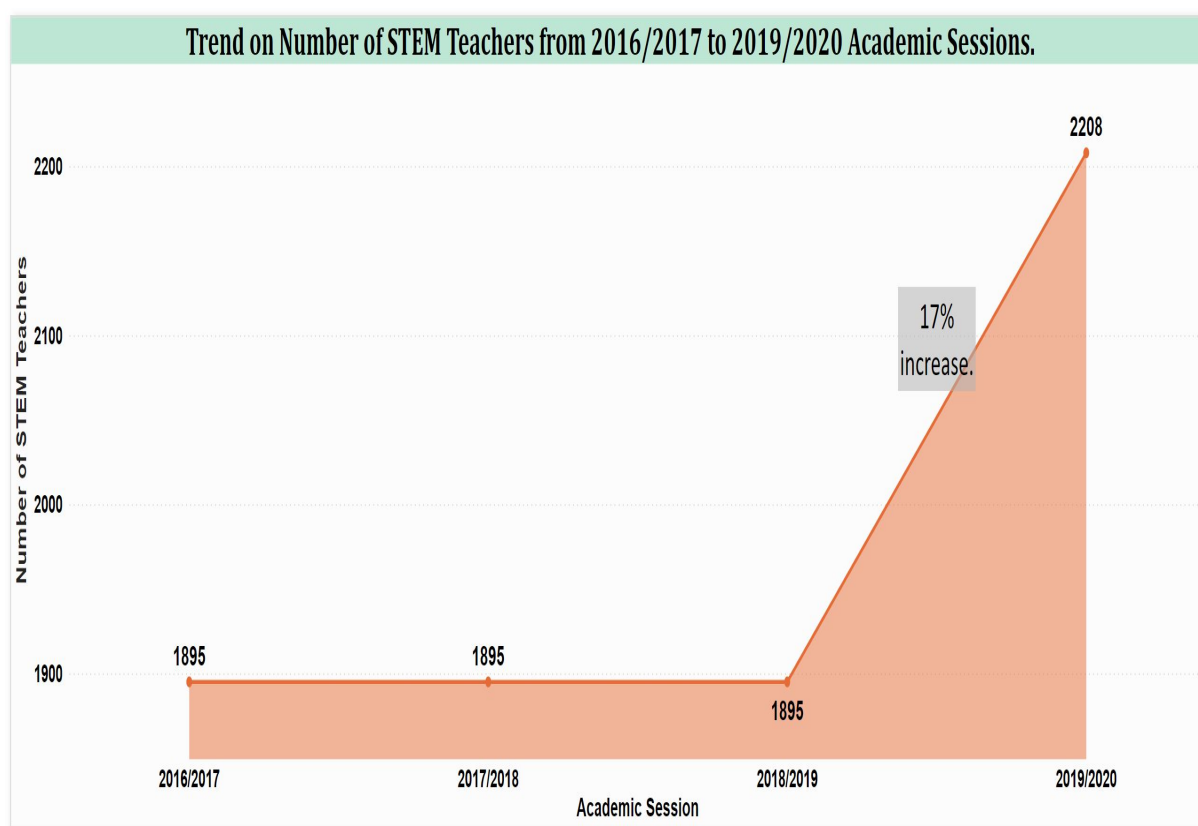
### 4.4.1 STEM Teachers

STEM which stands for Science, Technology, Engineering and Mathematics are core and important subjects in Schools. Table 4.6 records the number of STEM teachers in public secondary schools.

**Table 4.6:** Number of STEM Teachers from year 2016/2017 to 2019/2020

Description	ACADEMIC SESSION			
	2016/2017	2017/2018	2018/2019	2019/2020
Number of STEM teachers	1895	1895	1895	2208

Source: Lagos State Ministry of Education



**Figure 4.11:** Trend of STEM Teachers from 2016/2017 to 2019/2020 Academic Session.

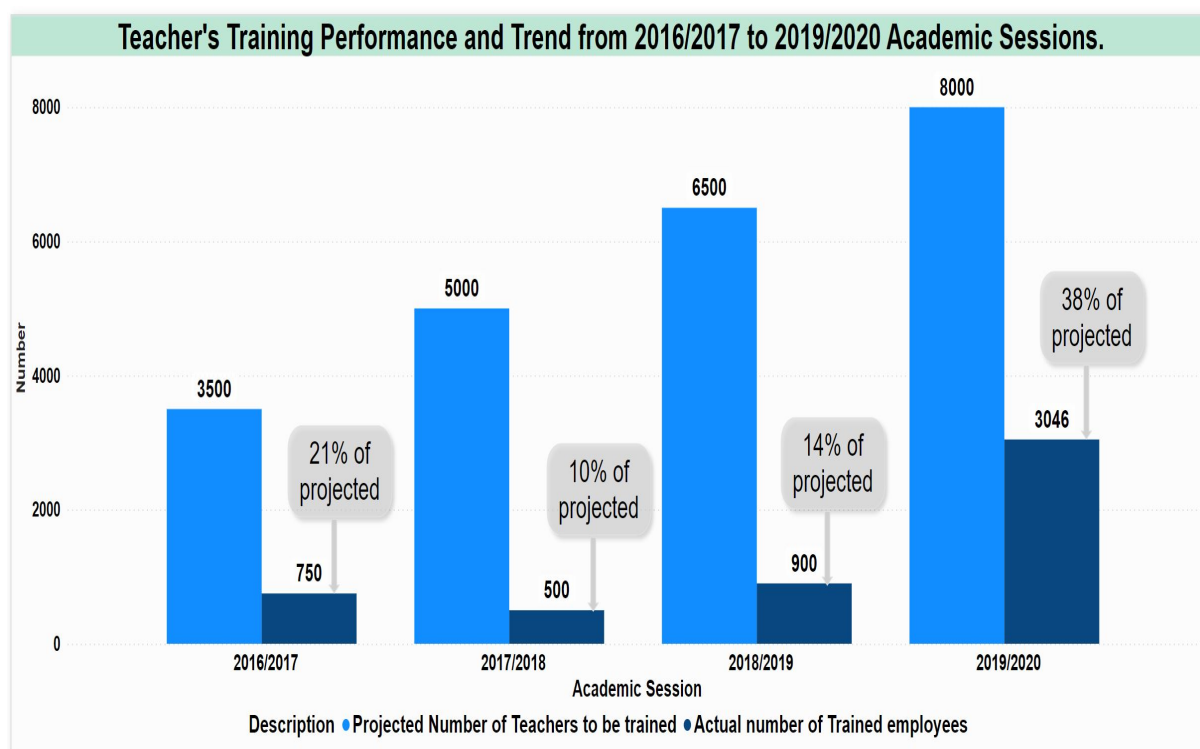
Figure 4.11 shows the trend of STEM Teachers. From the visual, we can see a massive increase of 17% in the number of STEM teachers between 2018/2019 to 2019/2020 academic sessions. This means that an additional 313 STEM teachers were recruited in 2019/2020 academic session.

### 4.4.2 Teacher's Training

**Table 4.7:** Statistics of Teacher's training from year 2016/2017 to 2019/2020

Description	ACADEMIC SESSION			
	2016/2017	2017/2018	2018/2019	2019/2020
Projected Number of Teachers to be trained	3500	5000	6500	8000
Actual number of Trained Teachers	750	500	900	3046

Source: Lagos State Ministry of Education



**Figure 4.12:** Trend of teachers' training performance from 2016/2017 to 2019/2020 Academic Session.

Figure 4.12 shows the trend of proposed vs actual performance rate of teacher's training. From the trend, there is a great improvement in target achievement in 2019/2020 session which records 38% of target met compared to the previous year that records less than one-quarter of the percentage, but above all, 50% of the target has not been met.

## 4.5 School Facility

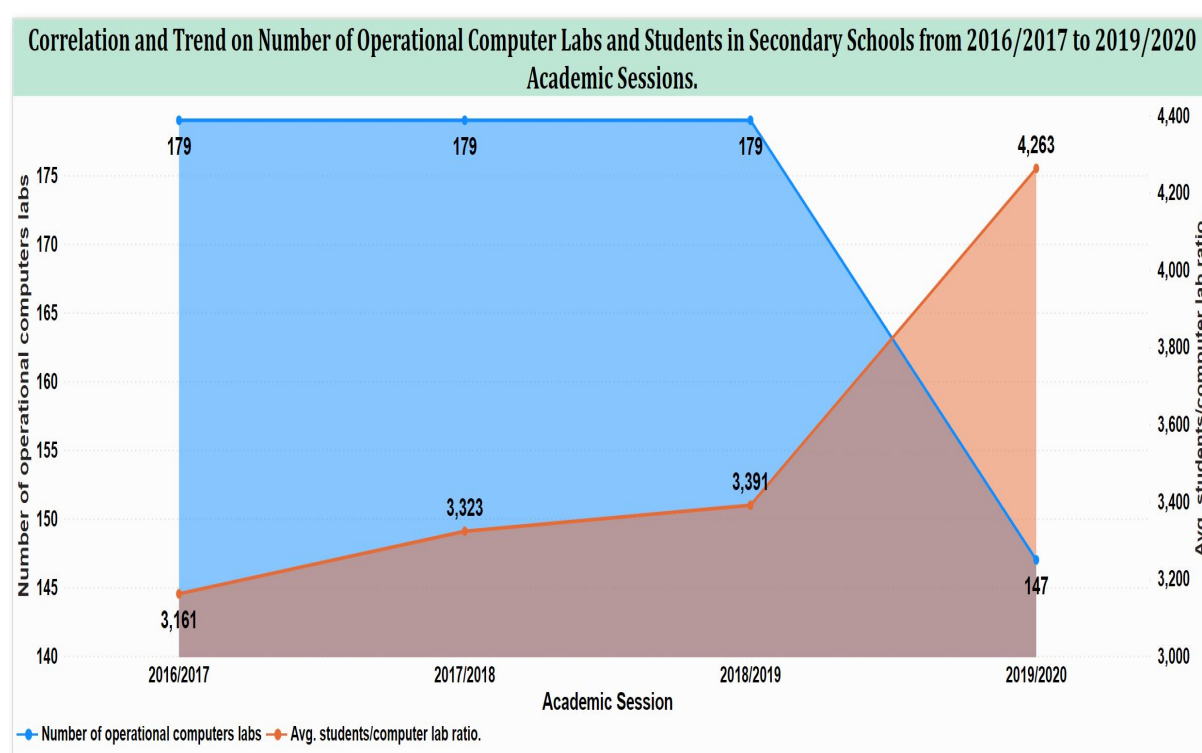
### 4.5.1 Operational computer labs in secondary schools

In a world of emerging technology, proficiency in the use of computers is very important for secondary school students. To track the availability of this infrastructure in secondary schools, Table 4.8 records the number of operational computer labs in secondary schools.

**Table 4.8:** Statistics of operational computer labs in secondary schools from 2016/2017 to 2019/2020 Academic Sessions.

Description	ACADEMIC SESSION			
	2016/2017	2017/2018	2018/2019	2019/2020
Number of operational computer labs in Secondary schools	179	179	179	147

Source: Lagos State Ministry of Education



**Figure 4.13:** Correlation and Trend of operational computer labs vs students in secondary schools from 2016/2017 to 2019/2020 Academic Sessions.

Figure 4.13 shows the trend of operational computer labs and average students per computer lab in secondary schools. From the trend, there is a huge decrease of 18% in operational computer labs which in turn caused a huge increase of 26% in average students/computer lab ratio between 2018/2019 to 2019/2020 academic sessions. This also shows that only approximately 22% of secondary schools have an operational computer lab.

## 4.6 Technology and Innovation

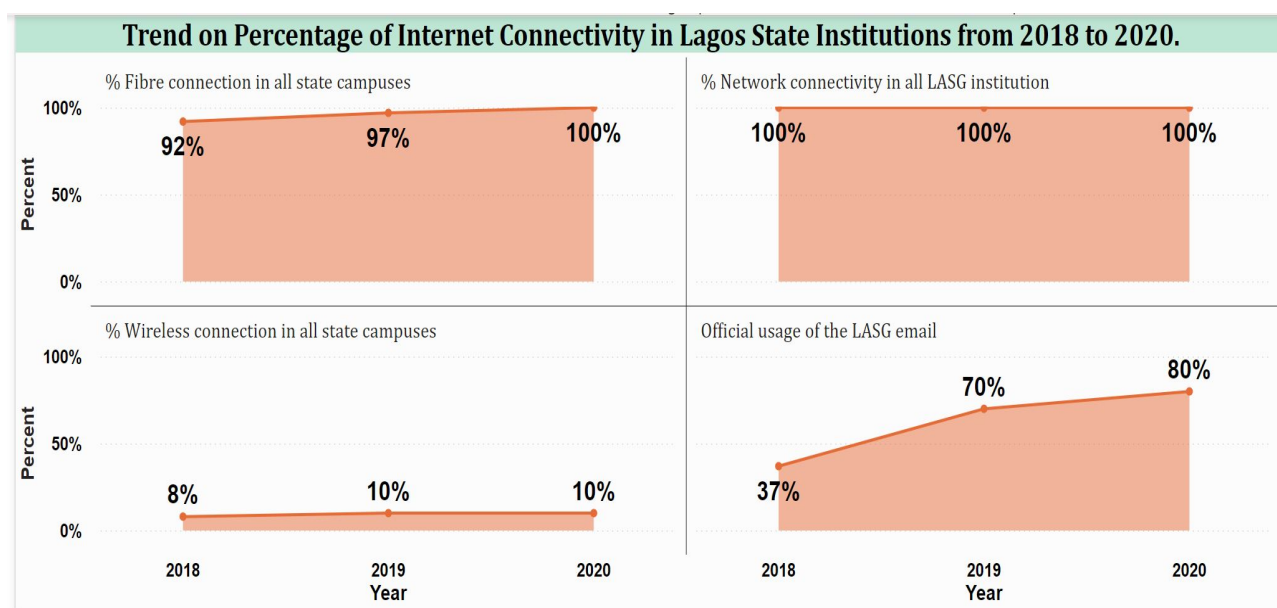
Technology and Innovation help to improve the economy of a State thereby improving the standard of living. One of the agendas of Lagos State Government is 'Making Lagos a 21st Century, so given that, they intend to improve network and internet connectivity in Lagos schools and Government offices in Lagos State. Table 4.9 records the number of fibre and wireless connectivity in Lagos State institutions and the rate of Email usage among Lagos State Staff.

**Table 4.9:** Statistics of internet connectivity in Lagos State institutions and Lagos State staff email registration and usage from year 2018 to 2020.

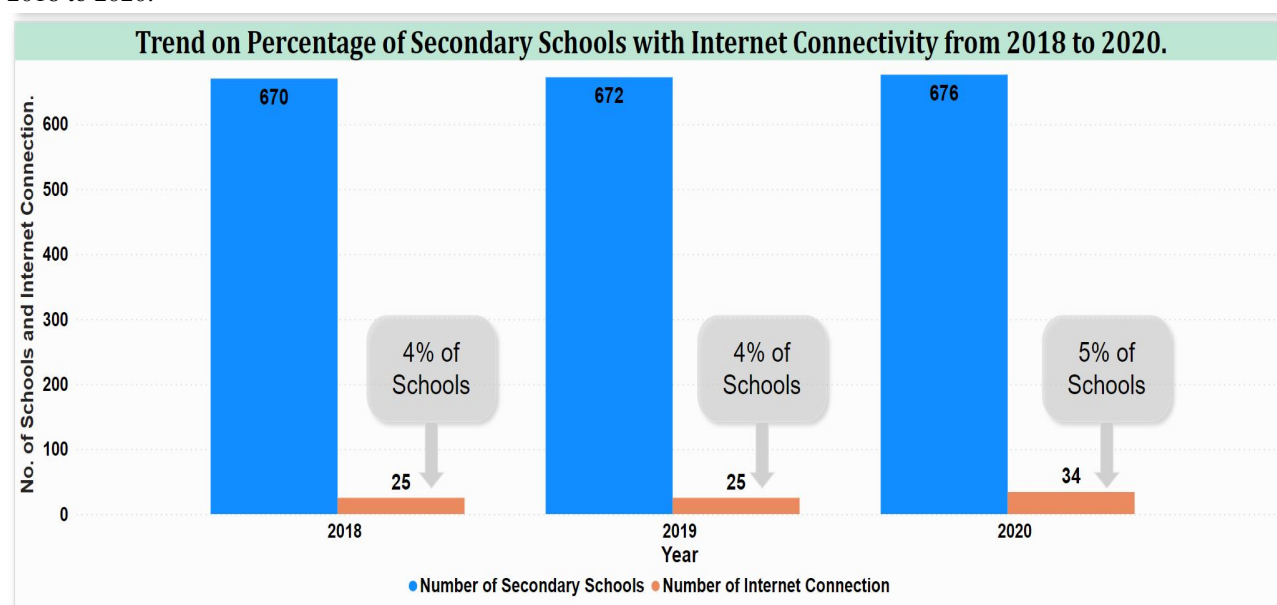
Description	Year		
	2018	2019	2020
<b>Internet Connectivity</b>			
Number of Schools with Internet	25	25	34
% Wireless connection in all state campuses	8%	10%	10%
% Fibre connection in all state campuses	92%	97%	100%
% Network connectivity in all lasg institution	100%	100%	100%
<b>Lagos State Staff Email Usage</b>			
No of LASG staff with official email address	59,468	60,984	57,200
Official usage of the LASG email	37%	70%	80%

*Source: Lagos State Ministry of Science and Technology*





(a) Trend of internet connectivity in Lagos State institutions, and Lagos State staff email registration, and usage from year 2018 to 2020.



(b) Trend of internet connectivity in public secondary schools from year 2018 to 2020.

Figure 4.14 shows a comparison between the total number of public secondary schools and the number of secondary schools having internet connections. This shows that as of 2020, only 5% of secondary schools have an internet connection.

## Chapter 5: Making Lagos a 21st Century



**Figure 5.1:** Making Lagos a 21st Century

A 21st-century economy is known for its Innovativeness, Creativity, Resilience, Timeliness, Urbanization and Technology making way for Local and international transactions; and investments in a smooth, rapid and transparent way.

Therefore, the current Babajide Sanwo-Olu led administration has put in place diverse supportive initiatives and interventions, likewise developed policies and programmes to achieve its economic status as the commercial and industrial hub of Nigeria. Some initiatives carried out by the present administration include:

- Reduction in Land Use Charge (LUC) rates and enacting the 2020 Property LUC Law and Regulations.
- Organising a Mentorship seminar for over 1,000 Youths in the State on the theme: “AGRICPRENEUR: Strategy for Wealth Creation”.
- Training of 5,908 people and placed 706 in jobs in partnership with United Nations Development Programme (UNDP), Deutsche Gesellschaft für Internationale Zusammenarbeit (GIZ) and United States African Development Fund (USADF), Microsoft, Coursera.
- Empowerment of 600 residents with ingenious business idea to the tune of N4billion through the Lagos State Empowerment Fund [LSETF] W-Initiative in collaboration with Access Bank Plc to empower Lagosians.
- Initiated the N5billion EduFund in partnership with First Bank and EdFin MFB.
- Launch of National Gas Vehicles (NGV) pilot scheme and Assess Impact on Emissions Reduction and Environmental Improvement
- Unveiled 5-year food security roadmap
- Completion and inauguration of several housing units across the State.
- Training of 8 Lagos State MEPB staff in an International Data Science Certification (DASCA) and capacity building on Data Analytics and Visualization of about 40 staff of the Ministry by BMGF/DSN.

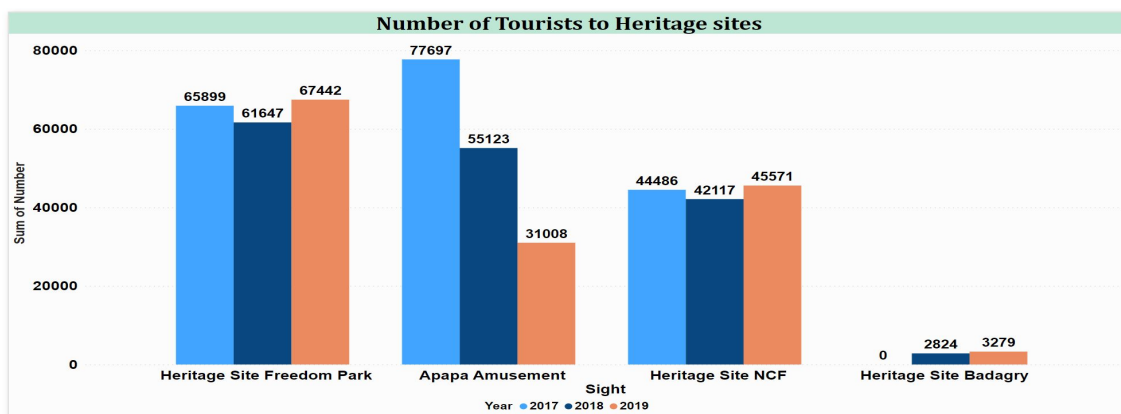
## Chapter 6: Entertainment and Tourism

### 6.1 Tourism

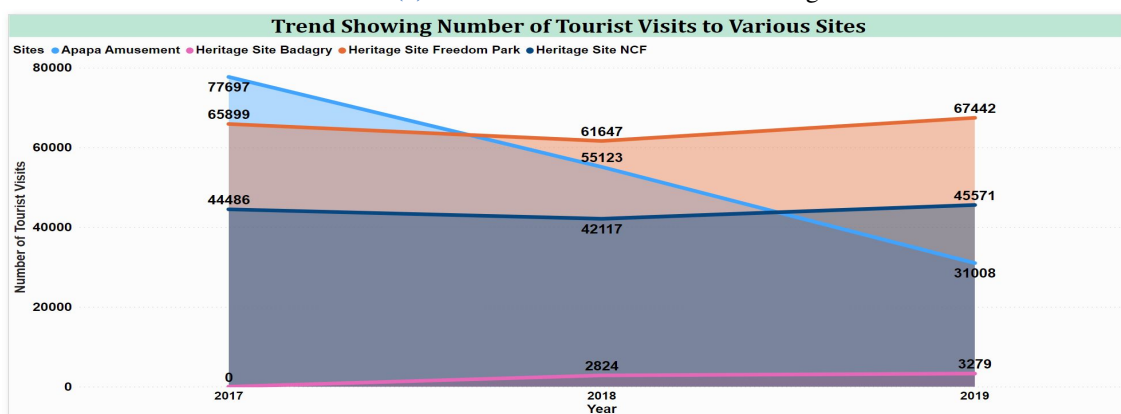
**Table 6.1:** Statistics on traffic to some tourist sites in Lagos State from 2017 to 2019

S/N	Sites	Year		
		2017	2018	2019
1	Heritage site Badagry	0	2,824	3,279
2	Heritage site Freedom Park	65,899	61,647	67,442
3	Heritage site NCF	44,486	42,117	45,571
4	Apapa Amusement	77,697	55,123	31,008
<b>Total</b>		<b>188,082</b>	<b>161,711</b>	<b>147,300</b>

Source: Ministry of Tourism, Arts and Culture.



(a) Statistics of Tourist Visits to Heritage Sites.



(b) Trend of visits to some tourist sites in Lagos State from 2017 to 2019.

Due to renovation works at the Badagry Heritage site in the YR 2017, there were no tourist visits to the site. From the figure above, it is observed that more tourists visited the Apapa Amusement site than the other sites in the year 2017 & 2018 but traffic to the Apapa Amusement reduced in the year 2019. Also, the trend of the visit to the various sites shows that traffic to the tourist sites reduced across the years.

## Chapter 7: Security, Governance and Finance

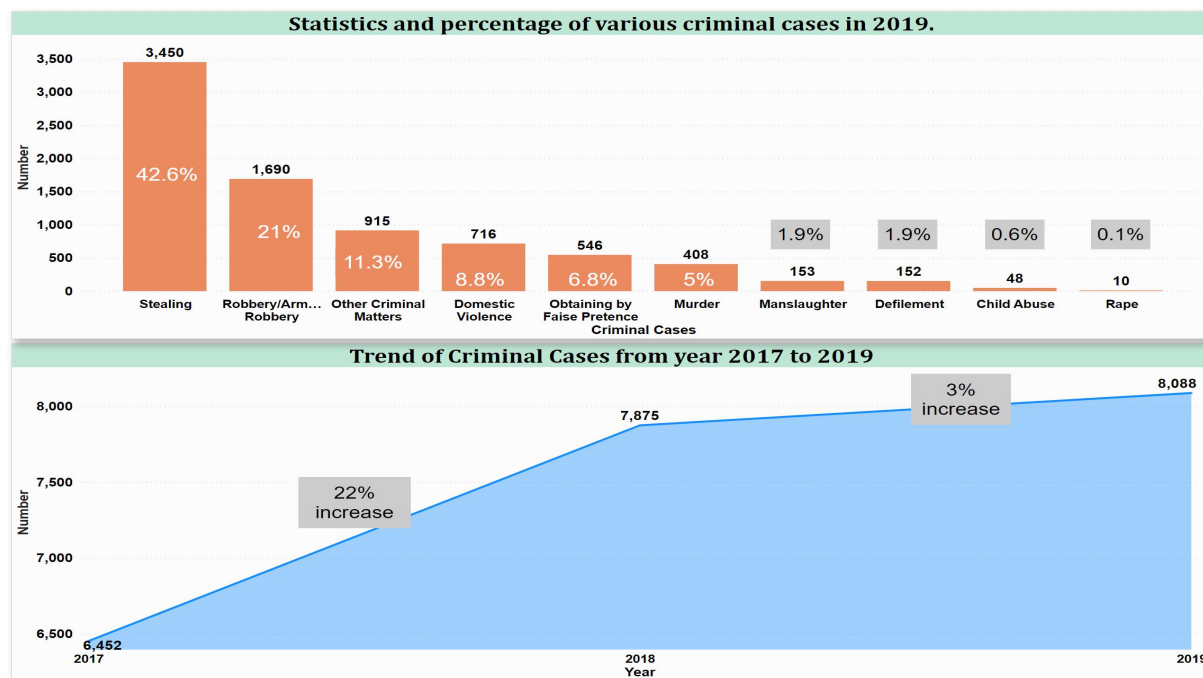
### 7.1 Criminal Cases

Eradication and reduction of the rate of crime which in turn will improve security are some of the agendas of the Government. Table 7.1 records and compares the number of different criminal cases from 2017 to 2019.

**Table 7.1:** Statistics of Criminal Cases in Lagos State from year 2017 to 2019.

S/N	Criminal Cases	Year		
		2017	2018	2019
1	Murder	410	463	408
2	Manslaughter	133	224	153
3	Robbery/Armed Robbery	1054	1460	1690
4	Other Criminal Matters	1353	1297	915
5	Domestic Violence	123	351	716
6	Rape	38	30	10
7	Defilement	307	184	152
8	Child Abuse	154	55	48
9	Stealing	2506	3375	3450
10	Obtaining by False Pretence	374	436	546

*Source: Office of Public Defender*



**Figure 7.1:** Composition and trend criminal cases in Lagos State from year 2017 to 2018.

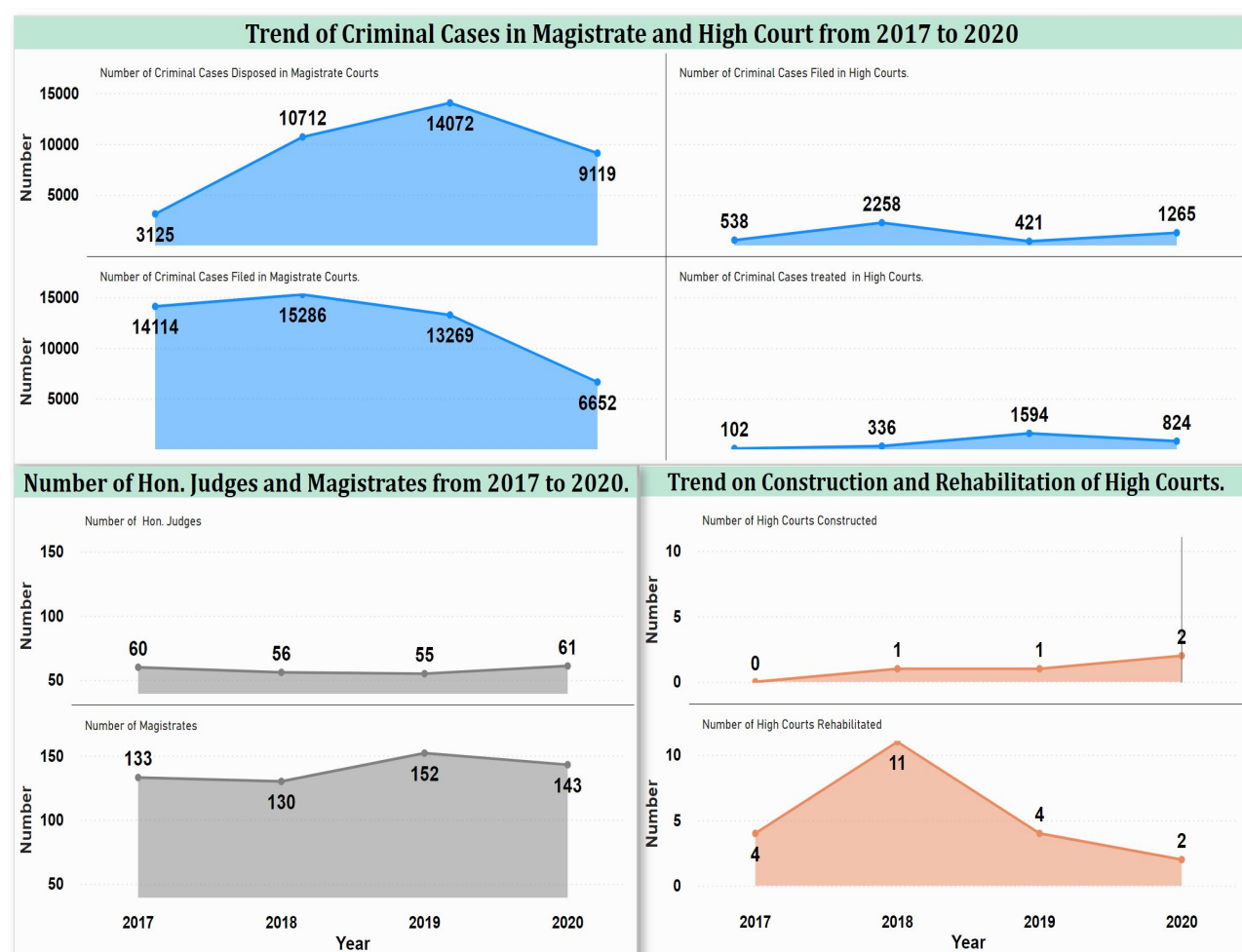
Figure 7.1 shows that stealing is the highest crime committed because it constitutes 42.6% of total crimes committed while rape is the least. Also, there is a 3% increase in crime committed in the year 2018 and 2019.

## 7.2 Judiciary

**Table 7.2:** Lagos State Judiciary Statistics data from 2017 to 2020

S/N	Description	Year			
		2017	2018	2019	2020
1	Number of Hon. Judges	60	56	55	61
2	Number of Magistrates	133	130	152	143
3	Number of Criminal Cases Filed in Magistrate Courts.	14,114	15,286	13,269	6,652
4	Number of Criminal Cases Filed in High Courts.	538	2,258	421	1,265
5	Number of Criminal Cases Disposed in Magistrate Courts	3,125	10,712	14,072	9,119
6	Number of Criminal Cases treated in High Courts.	102	336	1,594	824
7	Number of High Courts Constructed	0	1	1	2
8	Number of High Courts Rehabilitated	4	11	4	2
9	Number of pending cases	486	390	193	0

Source: Lagos State Judiciary.

**Figure 7.2:** Trend of activities in Lagos State Judiciary from 2017 to 2020.